

Table of Contents

A. EcoLogo Certified Cleaners	2
B. Green Seal Certified Cleaners	4
C. Green Seal Skin Care	8
D. EPA Registered Cleaning Supplies	11
E. LEED Cleaning Equipment	17
F. EPA Compliant Liners	23
G. Green Seal Paper	24
H. EPA Compliant Paper	29
I. OSHA Certified Gloves	35

EcoLogo Certified Cleaners

Multipurpose Cleaners



Diversey PERdiem™ Cleaner w/Hydrogen Peroxide

A concentrated cleaner based on proprietary Accelerated Hydrogen Peroxide (AHP®) technology. Contains no added dyes or fragrance. Can be used for carpet extraction, prespray and spotting. Use in autoscrubbers, mop and bucket and spray and wipe. Green Seal™ (GS-37).

CLNBPERDR

5 L RTD®

ea



Envirox® H2Orange2 Concentrate 116

General purpose cleaner, degreaser, deodorizer. Use on water-safe surface. Great for removing food grease. Neutral pH. Oxides source of odor. Pre-plugged chemical for the H2GO™ portable dispenser. Ecologo Certified (CCD-146).

CLNH2GO116

Gal. For H2GO™

4/cs



Envirox® H2Orange2 Concentrate 116

General purpose cleaner, degreaser, deodorizer. Use on water-safe surface. Great for removing food grease. Neutral pH. Oxides source of odor. Deep hydrogen peroxide cleaning power. Residue free, reduces re-soiling. Ecologo Certified (CCD-146). Surfaces are streak-free, even when left wet.

CLNH202BGS

Gal.

4/cs

Glass Cleaners



Diversey Glance® NA Non-Ammoniated Glass Cleaner

Non-streaking, quick-drying, non-ammoniated glass cleaner. Blue in color with a surfactant scent. Green Seal™ Certified (GS-37).

SCJ 3172641

2.5 L, J-Fill

2/cs



Diversey Glance® NA Non-Ammoniated Glass Cleaner

Non-streaking, quick-drying, non-ammoniated glass cleaner. Use on most washable surfaces, including chrome, stainless steel, and bathroom fixtures. Also use on laminate countertops. Green Seal® Certified (GS-37). Blue in color with a surfactant scent. Ecologo Certified (CCD-146).

CLNBGLANCER

1.5 L RTD®

2/cs



Diversey Glance® NA Non-Ammoniated Glass Cleaner

This glass and multi-purpose cleaner will not streak or smear glass, windows or mirrors..wipes clean and dries fast. Dilution: 1:40. Blue color.

CLNBGLANCECC

1.5 Gal. Command Center™

2/cs

Bathroom Cleaners



Diversey Crew® Bathroom Cleaner & Scale Remover

Mildly-acidic liquid cleaner specifically developed to remove soap scum and hard water deposits from most restroom surfaces. Green Seal® Certified (GS-37).

CLNBCREW

1.5 L RTD®

2/cs



Envirox® Mineral Shock RTU

Unique combination of organic salt & safe degreasing agents melts away hard water scale, soap scum, lime, rust, mold and mildew stains, and salts. Powered by GNx2 Technology. Non-corrosive to skin, biodegradable and non-fuming. Ecologo Certified (CCD-146).

CLNH202SHK

Qt.

12/cs

Degreasers



Envirox® Greasinator®

Improved cleaning power. Only plant derived renewable resource ingredients. No petroleum based ingredients. Reduced Aquatic Toxicity. Reduced Human Toxicity. Improved Biodegradability. Dilution rate for light duty 32:1, medium duty 16:1, heavy duty 8:1. Heavy degreasing with power, safety and sustainability for all your industrial needs. Powered with GNx2™ Technology. No VOC's. Safe for any water-safe surface. Ecologo Certified (CCD-146).

CLNH202GREAS

Gal.

4/cs

Floor Cleaners



Envirox® Super Concentrated Floors™

Powered by GNx2 Technology, it out performs conventional floor cleaning technology while raising the bar for health, safety and environmental impact. One product for all your hard floor cleaning needs. Use for mopping, auto-scrubbing, tile and grout renovation. Use for virtually any hard floor application! 4 per case. Green Seal™ (GS-37) and Ecologo (CCD-146)

CLNGNXFLRC

Gal.

4/cs

Carpet Care



Chemspec® DFC105

Our unique food based patent pending formulation emulsifies organic based oils quickly and effectively without the need or use of synthetic chemistry. 100% detergent free, no soaps no surfactants. No fragrance added. Green Seal Certified (GS-37). Ecologo certified (CCD-148).

FLRCSDFC1051

Gal.

4/cs

Green Seal Certified Cleaners

Multipurpose Cleaners



Diversey Alpha-HP® Multi-Surface Cleaner

An all-in-one, multi-purpose cleaner concentrate based on proprietary Accelerated Hydrogen Peroxide (AHP®) technology. Citrus scent. One product cleans and brightens surfaces safely and easily. Green Seal® certified (GS-37).

CLNBALPHMSR 1.5 L RTD® 2/cs



Diversey Crew® Bathroom Cleaner & Scale Remover

Mildly-acidic liquid cleaner specifically developed to remove soap scum and hard water deposits from most restroom surfaces. Green Seal® Certified (GS-37).

CLNBCREWR 1.5 L RTD® 2/cs



Diversey Alpha-HP™ Multi-Surface Cleaner

An all-in-one, multi-surface cleaner that cleans and brightens surfaces quickly and easily. Formulated with accelerated hydrogen peroxide. Use as spray and wipe or with a mop sponge or hand pad. Green Seal® certified (GS-37).

SCJ 3401512 2.5 L, J-Fill 2/cs



Diversey PERdiem™ Cleaner w/Hydrogen Peroxide

A concentrated cleaner based on proprietary Accelerated Hydrogen Peroxide (AHP®) technology. Contains no added dyes or fragrance. Can be used for carpet extraction, prespray and spotting. Use in autoscrubbers, mop and bucket and spray and wipe. Green Seal™ (GS-37).

CLNBPERDR 5 L RTD® ea



NCL® Earth Sense® #18 Multi-Surface Cleaner

With H2O2 super concentrate. Uses the power of hydrogen peroxide, all-natural citrus solvents and environmentally preferred detergents. Safely yet effectively cleans almost any washable surface. Use with the Earth Sense Twin Power Dispensing Unit. 6 per case, Green Seal Certified (GS-37).

CLNESMSH20 64 oz. Bottle 6/cs
CLNESSUP-D 64 oz. Bottle 6/cs



NCL® Ready Set CLEAN!® #3 Earth Sense® Washroom Cleaner

An outstanding washroom cleaner that can be used for all restroom applications. Readily biodegradable with no VOC's. Use to safely clean bowls, urinals, chrome, and sinks. Also use on tub and tile and other restroom fixtures. Green Seal™ (GS-37).

CLNESWASHR Gal. 4/cs



NCL® Ready Set CLEAN!® #4 Earth Sense® All Purpose

A high performance pH neutral cleaner that is environmentally responsible not formulated with phosphates, solvents, nonylphenol ethoxylate surfactants. No added fragrance, silicates, chelating agents or caustics. Readily biodegradable with no VOC's. Gal., 4 per case. Green Seal™ (GS-37).

FLRESNEUR Gal. 4/cs



NCL® Ready Set CLEAN!® Multi-Surface Cleaner w/H2O2

Earth Sense® Multi-Surface Cleaner uses the power of hydrogen peroxide, naturally-derived solvents and environmentally preferred detergents. For safe and effective cleaning. Use in a wide variety of applications. Green Seal™ (GS-37).

CLNESH20R Gal. 4/cs



Simple Green® Original Formula

Product Applications: Building/grounds maintenance, janitorial cleaning: floors, walls, counters, doors, concrete, tile, stainless steel, etc., clean and deodorize grease filters/traps, surface prep before painting. Concentrated, water-based cleaner/degreaser contains blend of synthetic, high-grade penetrants activated by cold/hot water. Biodegradable and non-toxic. Non-abrasive and non-flammable. Safe alternative to hazardous chemicals and solvents. Green Seal™ (GS-37).

CLNSGREEN Gal. 6/cs

Glass Cleaners



Diversey Glance® NA Non-Ammoniated Glass Cleaner

Non-streaking, quick-drying, non-ammoniated glass cleaner. Blue in color with a surfactant scent. Green Seal™ Certified (GS-37).

SCJ 3172641 2.5 L, J-Fill 2/cs

Green Seal Certified Cleaners



Diversey Glance® NA Non-Ammoniated Glass Cleaner

This glass and multi-purpose cleaner will not streak or smear glass, windows or mirrors. Wipes clean and dries fast. Dilution: 1:40. Blue color.

CLNBGLANCECC 1.5 Gal. Command Center™ 2/cs



Diversey Glance® NA Non-Ammoniated Glass Cleaner

Non-streaking, quick-drying, non-ammoniated glass cleaner. Use on most washable surfaces, including chrome, stainless steel, and bathroom fixtures. Also use on laminate countertops. Green Seal® Certified (GS-37). Blue in color with a surfactant scent. Ecologo Certified (CCD-146).

CLNBGLANCER 1.5 L RTD® 2/cs



NCL® Earth Sense® #19 Glass & Window Cleaner

A unique glass and window cleaner made with no phosphates, solvents, or nonylphenol ethoxylate surfactants. Readily biodegradable with no VOC's, no added dyes. No added fragrance, silicates, chelating agents or caustics. 6 per case; Earth Sense® 1:100 (1 GPM). Green Seal™ (GS-37).

CLNESGLASS 64 oz. 6/cs



NCL® Ready-Set-CLEAN!® #1 Glass & Window Cleaner

Earth Sense®. Readily biodegradable with no VOCs. Ideal for all types of glass, windows, mirrors and plexiglas. Highly concentrated for added cost savings. Environmentally responsible. Made with naturally-derived surfactants. Green Seal™ (GS-37).

CLNESGLASSR Gal. 4/cs



Professional Easy-Off® Glass Cleaner

This concentrated formula is ammonia free and makes up to 10 gallons of cleaning solution. Ideal for decreasing dirt and grease that cause streaking. Use on windows, mirrors, glass and vinyl. Green Seal™ (GS-37).

CLNEGLASS Gal. 4/cs

Degreasers



Chemspec® DFC Heavy Duty Cleaner/Degreaser

A multi-surface multi-use cleaner/degreaser that cuts through the heaviest greasy soils without the use of solvents or detergents. Turns organic soils into soaps that free rinse from any surface. Use for industrial flooring to carpet and is excellent at releasing soils from all cleaning/maintenance tools. Green Seal™ (GS-37).

FLRCSDFCHD Gal. 4/cs

Floor Cleaners



Butchers® #5 Raindance Floor Cleaner

Low foam neutral formula. Effective detergents clean floors thoroughly. Non-alkaline formula cannot dull high-gloss finish. Fresh clean fragrance. Use with autoscrubber or mop and bucket, no rinsing needed. Dilution: 1:256.

FLRBRAINCC 1.5 Gal. Command Center 2/cs



EnvirOx® Grout-Safe

Cleans heavy soil and soap scum. Returns surfaces to original color. Destroys odors. Safe on skin & surfaces. Ready to use. For manual dilution & Blend Buddy I Grout Safe dispenser. Green Seal™ (GS-37).

CLNH202GRT Gal. 4/cs



Butchers® Raindance™ Floor Cleaner

Low foam formula ideal for autoscrubbers. Effective detergents clean floors thoroughly. Non-alkaline formula cannot dull high-gloss finish. No rinsing needed; Clean, fresh fragrance. Dilution: 1:40 mop & bucket; 1:64 autoscrubber. Green Seal Certifies (GS-40)

FLRBRAIN5 5 Gal. ea



Diversey Stride® Citrus Neutral Cleaner

Non-alkaline formulation for daily use on floors, walls and other washable surfaces. Neutral pH, so it cleans without damage to floors' protective coating. Cleans nearly all washable surfaces. Green Seal™ (GS-37).

FLRBSTRIDE Gal. 4/cs



Diversey Stride® Citrus Neutral Cleaner

Non-alkaline formulation for daily use on floors, walls and other washable surfaces. Neutral pH, so it cleans without damage to floors' protective coating. Cleans nearly all washable surfaces. Green Seal™ (GS-37).

FLRBSTRIDE5R 5 L RTD® ea

Green Seal Certified Cleaners



Diversey Stride® Citrus Neutral Cleaner

Non-alkaline formulation for daily use on floors, walls and other washable surfaces. Neutral pH, so it cleans without damage to floors' protective coating. Cleans nearly all washable surfaces. Green Seal™ (GS-37).

SCJ 04716

2.5 L J-Fill®

2/cs



EnviroX® Super Concentrated Floors™

Powered by GNx2 Technology, it out performs conventional floor cleaning technology while raising the bar for health, safety and environmental impact. One product for all your hard floor cleaning needs. Use for mopping, auto-scrubbing, tile and grout renovation. Use for virtually any hard floor application! 4 per case. Green Seal™ (GS-37) and Ecologo (CCD-146)

CLNGNXFLRC

Gal.

4/cs



PortionPac® MopPacLite® pH Neutral Cleaner

Liquid blend of organic detergents and solvents. pH of 7.0 to 7.2 leaves no residue to dull high gloss finishes. Excellent for damp mopping or auto scrubbing. Pleasantly scented. Green Seal™ (GS-37).

FLRPP18041

Makes 4 Gallons

432/cs

Floor Finish



Diversey Aquaria™ Floor Finish

A clean, long-lasting floor finish that meets your environmental expectations. Durable, proven polymer technology. Exceptional buff response. Off-white in color with an ammonia scent. Green Seal® Certified (GS-40).

FLRBAQUARIA

5 Gal. Envirobox™

ea



NCL® Earth Sense® Aspire™ Floor Sealer/Finish

This environmentally responsible metal-free formulation meets the "Industrial and Institutional Floor-Care Products Standard" (GS-40). Green Seal® Certified. Recommended for use in Federal, State and Local Government Offices, Military Bases, Municipal Facilities, Day Care Centers, Hospitals, Nursing Homes, Office Building, Parks and Recreation Centers, Schools, Universities, Hotels, Lodging and any facility sensitive to environmental and human health characteristics. Authorized UL Product. A technologically advanced "non-zinc" sealer/finish. It produces an immediate wet look gloss and is buffable with a 330-2000+ RPM equipment.

FLRESGFIN

Gal.

4/cs

Floor Restorers/Maintenance



PortionPac® NeutraPac® Floor Conditioner/Neutralizer

Neutralizes alkaline residue after stripping and conditions floor for better adhesion of floor finish. Apply with mop, auto scrubber or carpet extractor. Green Seal™ (GS-53).

FLRPP4041

Makes 4 Gallons

432/cs

Floor Strippers



Diversey Pro Strip™ SC Floor Stripper

Highly concentrated low odor floor stripper formulated to meet Green Seal® requirements. Delivers fast, consistent removal of floor finish. Powerful, fast-acting, low foam formula. Quickly bites through layers of finish. Not formulated with butyl or ammonia.

FLRBSTRIP5R

5 L RTD®

ea



NCL® Green Impact™ Earth Sense® Speed Stripper

A fast-acting speed stripper. This highly effective, odorless stripper removes Earth Sense® Aspire Metal-Free Floor Finish. This environmentally responsible formulation meets the Industrial and Institutional Floor Care Products Standard (GS-40) and has been certified by Green Seal. Non-toxic, non-flammable, non-caustic. No phosphates, no butyl, no NPE or APE surfactants, no free alkali, no added fragrances. Powerful, yet low odor formulation is excellent for use in healthcare facilities, nursing homes, any area where objectional odors present a problem. Super-concentrated formula for economical in-use dilution costs.

FLRESGSTRIPR

Gal.

4/cs

Carpet Care



Chemspec® DFC105

Our unique food based patent pending formulation emulsifies organic based oils quickly and effectively without the need or use of synthetic chemistry. 100% detergent free, no soaps no surfactants. No fragrance added. Green Seal Certified (GS-37). Ecologo certified (CCD-148).

FLRCSDFC1051

Gal.

4/cs

Green Seal Certified Cleaners



EnviroX® Carpet Complete™ Concentrate

A complete carpet cleaning system in one, easy to use product. Powered with GNx2™ Technology. Removes stains and browning and deodorizes. Restores color brightness, dramatically reduces re-soiling. Cleans with the power of hydrogen peroxide. Carpet and Rug Institute Certified.

CLNH202CRYS

Gal.

4/cs



EnviroX® Quick-Spot® Carpet Cleaner

Revolutionary non-resoiling encapsulating technology in ready-to-use formula! Powered with GNx2™ Technology. Clean with the power of hydrogen peroxide! Removes stains and browning, deodorizes. Ready to use. 12 per case. Green Seal Certified (GS-37)

CLNH202QS

Qt.

12/cs



Host® Dry Carpet Cleaner

Excellent for all carpet cleaning jobs. Has a clean fresh fragrance. Contains a balance blend of water, detergent, wetting agents and natural ingredients. Can be used for every day or restoration cleaning. Green Seal® Certified. GS-08, GS-37

FLRHEXTRA30

30 lb. Bucket

ea



Host® Dry Carpet Cleaner

Excellent for all carpet cleaning jobs. Has a clean fresh fragrance. Contains a balance blend of water, detergent, wetting agents and natural ingredients. Can be used for every day or restoration cleaning. Green Seal® Certified. GS-08, GS-37.

FLRHEXTRA

12 lb. Bucket

4/cs



Host® SJ For Special Jobs

Formulated for special jobs such as asphalt parking lot trackoff or for use on solution dyed nylon, polypropylene, white or off-white wool berber. Use on light colored carpet as well. WoolSafe approved. Green Seal® certified. GS-37.

FLRHSJ

12 lb Bucket

4/cs

Foaming Soaps



BWK 8400

CS

**Boardwalk Fm Sp Refill G Re Seal
1250ml 4/cs**

Contains 0.5% Triclosan™. Fresh fragrance. Luxury Foam Antibacterial Skin Cleanser.



GOJ 881303

3/cs

**GOJO® Citrus Ginger Foam Hand &
Showerwash**

Spa-inspired, green certified foam hand soap and showerwash offers luxurious lather. Vivid citrus green color. EcoLogo® certified. Enriched with moisturizers, natural extracts. Also enriched with skin conditioners. Citrus ginger scent.

1250 mL ADX-12™



GOJ 871304

4/cs

**GOJO® Citrus Ginger Foam Hand &
Showerwash**

Spa-inspired, green certified foam hand soap and showerwash offers luxurious lather. Vivid citrus green color. EcoLogo® certified. Enriched with moisturizers, natural extracts. Also enriched with skin conditioners. Citrus ginger scent.

700 mL ADX-7™



GOJ 881103

3/cs

**GOJO® Clear & Mild Foam
Handwash**

Spa-inspired, green certified foam hand soap offers luxurious foam lather in a fragrance- and dye-free formulation. EcoLogo® certified. Enriched with moisturizers and skin conditioners. USDA certified biobased formulation.

1250 mL ADX-12™



GOJ 871104

4/cs

**GOJO® Clear & Mild Foam
Handwash**

Spa-inspired, green certified foam hand soap offers luxurious foam lather in a fragrance- and dye-free formulation. EcoLogo® certified. Enriched with moisturizers and skin conditioners. USDA certified biobased formulation.

700 mL ADX-7™



GOJ 131103

3/cs

**GOJO® Clear & Mild Foam
Handwash Refill**

Appealing to the eye, soothing to the touch and nourishing to the skin. Moisturizers, natural extracts and skin conditioners added. Durable, recyclable refill.

700 mL LTX-7™



GOJ 191102

2/cs

**GOJO® Clear & Mild Foam
Handwash Refill**

Appealing to the eye, soothing to the touch and nourishing to the skin. Moisturizers, natural extracts and skin conditioners added. Durable, recyclable refill.

1200 mL LTX-12™

GOJ 516503
HDGJ5165

3/cs

3/cs

GOJO® Foam Hand Cleaner

A mild, biodegradable foam soap formula certified by Green Seal® and EcoLogo™ to meet their joint standard for hand cleaners and hand soaps. Non-antimicrobial.

1250 mL FMX-12™ Refill

1250 mL FMX-12™ Refill



HDGJ8565

2/cs

GOJO® Foam Hand Cleaner

A mild, biodegradable foam soap formula certified by Green Seal® and EcoLogo™ to meet their joint standard for hand cleaners and hand soaps. Non-antimicrobial.

1500 mL CX™ Refill



GOJ 526502

2/cs

GOJO® Foam Hand Cleaner

A mild, biodegradable foam soap formula certified by Green Seal® and EcoLogo™ to meet their joint standard for hand cleaners and hand soaps. Non-antimicrobial.

2000 mL FMX-20™ Refill



GOJ 131603

3/cs

**GOJO® Pomeberry Foam Handwash
Refill**

Appealing to the eye, soothing to the touch and nourishing to the skin. Moisturizers, natural extracts and skin conditioners added. EcoLogo® certified. Durable, recyclable refill.

700 mL LTX-7™



GOJ 191602

2/cs

**GOJO® Pomeberry Foam Handwash
Refill**

Appealing to the eye, soothing to the touch and nourishing to the skin. Moisturizers, natural extracts and skin conditioners added. EcoLogo® certified. Durable, recyclable refill.

1200 mL LTX-12™



HDKGSPUMP

8/cs

**Kutol Clean Shape™ Foaming Hand
Soap**

Dispenses easily with soft foam. .75 ml per pump, 1267 handwashings per 950 ml bottle. General purpose, light to medium soil removal. Ruby pink color. Pleasant, tropical fragrance.

950 mL

Green Seal Skin Care



HDKCMFOAMGS

Kutol EZ Foam Counter Mount Luxury Hand Soap

Luxurious foaming soap with a very appealing tropical fragrance. Contains Aloe and Vitamin E. Economical and soft dispensing. A favorite among end-users.

1000 mL

4/cs



HDKFOAMGS

Kutol EZ Foaming Luxury Hand Soap

Green Seal™ certified. Ruby pink color. Pleasant tropical fragrance. General purpose. Light to medium soil removal. With Aloe & Vitamin E.

1000 mL

6/cs



HDKGSFOAMG

Kutol Foaming Luxury Hand Soap

Luxurious foaming soap with a very appealing tropical fragrance. Contains Aloe and Vitamin E. Economical and soft dispensing, a favorite among end users.

Gal.

4/cs



TEC 3486575

Rubbermaid® Enriched Foam Hand & Body Shampoo

For use with Rubbermaid FLeX™ dispensers. Green Seal™ certified.

1300 mL

3/cs



TEC 3486571

Rubbermaid® Enriched Foam Hand Wash

For use with Rubbermaid FLeX™ dispensers. Green Seal™ certified.

1300 mL

3/cs



HDTCFEAM

TC® AutoFoam Lotion Soap w/Moisturizers

Specially formulated with extra mild cleansing ingredients for frequent hand washing. Enriched with moisturizers to help soothe and soften skin. Up to 2,750 hand washes per refill. Green Seal® Certified.

1100 mL

4/cs

Liquid Soaps



GOJ 186504

GOJO® Green Certified Lotion Hand Cleaner

This product meets the Green Seal™ and EcoLogo® environmental standard for institutional hand cleaners. For general institutional hand washing.

Gal.

4/cs



HDKGS

Kutol Green & Clean Hand Soap

Ideal for any situation where medium to heavy soil removal is needed. Green Seal® Certified. Tropical fragrance. Opaque appearance. White color.

Gal., Pour-Top

4/cs



HDKGRN

Kutol Green & Clean Hand Soap

Gentle, effective cleaning, easy on the skin and good for the environment. White color, pleasant tropical fragrance. Biodegrades 90% in 30 days. Green Seal® Certified.

1000 mL

10/cs



TEC 3486562

Rubbermaid® Enriched Lotion Hand Wash

For use with Rubbermaid FLeX™ dispensers. Green Seal™ certified.

500 mL

5/cs



TEC 3486572

Rubbermaid® Enriched Lotion Hand Wash

For use with Rubbermaid FLeX™ dispensers. Green Seal™ certified.

1300 mL

3/cs



HDTG

TC® Lotion Hand Soap Refill

Gentle hand soap for use anywhere. Produces a rich lather & has a fresh, light, floral scent.

800 mL

4/cs



HDB9210

WausauPaper® Lotion Soaps

Multi-purpose lotion soap for lavatories, ideal for general use. Antibacterial lotion soap contains 1% PCMX bactericide to effectively eliminate the broadest possible spectrum of bacteria. Controls nosocomial infection and provides superior skin sanitation. Contains rich emollients to help soften skin and prevent drying.

1200 mL Lotion

8/cs

Hair And Body Shampoo



GOJ 526302

GOJO® Foam Hand, Hair & Body Wash

Green certified, spa-quality foam body wash and hair shampoo with a cucumber melon scent. GOJO Sanitary Sealed™ refill helps lock out germs. Refill. Use dispenser: 5250-06, 5255-06.

2000 mL FMX-20™ Refill

2/cs

Green Seal Skin Care



GOJ 5163-03

GOJO® Luxury Foam Hair & Body Wash

Green, spa-quality foam body wash and hair shampoo with a cucumber melon scent. FMX-12™ 1250 mL Refill. Use dispenser: 5150-06, 5155-06.

1250 mL FMX-12™ Refill

3/cs



GOJ 549104

GOJO® Purell® Advanced Instant Hand Sanitizer

Green Certified. Hand sanitizer gel that contains ingredients made from natural renewable resources. Kills more than 99.99% of most common germs. Nourishing blend of four skin conditioners. Meets EcoLogo® hand sanitizer standard. 4 per case; TFX-12™ 1200 mL Refill.

1200 mL TFX-12™ Refill

4/cs

Sanitizers



GOJ 880403

GOJO® Purell® Advanced Foam Instant Hand Sanitizer

Green Certified. Hand sanitizer foam that contains ingredients made from natural renewable resources. Kills 99.99% of most common germs on hands. Includes a nourishing blend of four skin conditioners. Clinically proven to help maintain skin health.

1200 mL ADX-12™

3/cs



GOJ 870404

GOJO® Purell® Advanced Instant Hand Sanitizer Foam

Green Certified. Hand sanitizer foam that contains ingredients made from natural renewable resources. Kills more than 99.99% of most common germs. GOJO Sanitary Sealed™ refill helps lock out germs. Fresh dispensing valve with each refill.

700 mL ADX-7™

4/cs



GOJ 369112

GOJO® Purell® Advanced Instant Hand Sanitizer

Green Certified. Made from 100% naturally renewable ethanol. Meets the USDA BioPreferred program for biobased content. Readily biodegradable gel formula. Meets the EcoLogo hand sanitizer standard CCD-170.

12 oz.

12/cs



GOJ 539102

GOJO® Purell® Advanced Instant Hand Sanitizer Foam

Green Certified. Made from 100% naturally renewable ethanol. Meets the USDA BioPreferred program for biobased content. Readily biodegradable non-aerosol foam formula. Meets EcoLogo™ hand sanitizer standard CCD-170.

1200 mL TFX-12™ Refill

2/cs



GOJ 880303

GOJO® Purell® Advanced Instant Hand Sanitizer

Green Certified. Hand sanitizer foam that contains ingredients made from natural renewable resources. Kills 99.99% of most common germs on hands. Includes a nourishing blend of four skin conditioners. Clinically proven to help maintain skin health. ADX-12™ 1200 mL refill. 3 per case.

1200 mL ADX-12™

3/cs



GOJ 190402

GOJO® Purell® Advanced Instant Hand Sanitizer Foam

Green Certified. Hand sanitizer foam that contains ingredients made from natural renewable resources. Kills more than 99.99% of most common germs. GOJO Sanitary Sealed™ refill helps lock out germs. Fresh dispensing valve with each refill.

1200 mL LTX-12™

2/cs



GOJ 870304

GOJO® Purell® Advanced Instant Hand Sanitizer

Green Certified. Hand sanitizer foam that contains ingredients made from natural renewable resources. Kills 99.99% of most common germs on hands. Includes a nourishing blend of four skin conditioners. Clinically proven to help maintain skin health. ADX-7™ 700 mL refill. 4 per case.

700 mL ADX-7™

4/cs



GOJ 969112

GOJO® Purell® Green Certified Instant Hand Sanitizer

Green Certified. Made from 100% naturally renewable ethanol. Meets the USDA BioPreferred program for biobased content. Readily biodegradable gel formula. Meets EcoLogo™ hand sanitizer standard CCD-170.

8 oz.

12/cs



GOJ 190302

GOJO® Purell® Advanced Instant Hand Sanitizer

Green Certified. Hand sanitizer gel that contains ingredients made from natural renewable resources. Kills 99.99% of most common germs on hands. Includes a nourishing blend of four skin conditioners. Clinically proven to help maintain skin health.

1200 mL LTX™

2/cs



GOJ 519803

GOJO® Purell® Instant Hand Sanitizer Skin Nourishing

This skin nourishing foam is clinically proven to improve skin condition in 14 days. Green Certified. Meets EcoLogo™ hand sanitizer standard CCD-170. Made from 100% naturally renewable ethanol. Meets the USDA BioPreferred program for biobased content. 3 per case; FMX-12™ 1200 mL Refill.

1200 mL FMX-12™ Refill

3/cs

Multipurpose Liquids



Envirox® H2Orange2 Concentrate 117

Multi-Purpose Cleaner-Sanitizer-Virucide-HBV. EPA registered. The Carpet & Rug Institute Seal of Approval. NSF registered. ONE cleaning product FOUR ready-to-use dilutions for ALL your cleaning needs. People safe, surface safe, color safe. For manual dilution, Spray Buddy and Blend Buddy I & II. Orange oil penetrates surfaces and breaks down oils. Biodegradable surfactants dissolve and suspend soil in water. Hydrogen peroxide oxidizes soil and stains, destroys odors, provides color safe bleaching and kills bacteria and viruses. Kills 99.99% of common bacteria and 99.9% of specified viruses, including Hepatitis B. Combine with Critical Care Disinfectant-Virucide-Fungicide for the best infection control program available today!

CLNH202B

Gal.

4/cs



Envirox® H2Orange2 Concentrate 117

A general cleaner, degreaser, sanitizer, deodorizer, virucide. The only EPA registered stabilized hydrogen peroxide sanitizer-virucide-HBV. Pre-plugged chemical for the H2GO™ portable dispenser.

CLNH2GO117

Gal.

For H2GO™

4/cs



Envirox® One All Purpose Cleaner

Available in various sizes. Cleans mold and mildew stains. US EPA Registered.

CLNH202ONE

Qt.

12/cs



P&G Mr. Clean® Multi-Surface Antibacterial Cleaner

All purpose antibacterial multi-surface 3 cleaners in 1. Cuts tough grease. Contains antibacterial action to kill germs. Cleans glass surfaces to a streak-free shine. Summer citrus. US EPA Registered.

CLNMISTER

28 oz.

9/cs

Glass Cleaner



NCL® Earth Sense® #19 Glass & Window Cleaner

A unique glass and window cleaner made with no phosphates, solvents, or nonylphenol ethoxylate surfactants. Readily biodegradable with no VOC's, no added dyes. No added fragrance, silicates, chelating agents or caustics. 6 per case; Earth Sense® 1:100 (1 GPM). Green Seal™ (GS-37).

CLNESGLASS

64 oz.

6/cs

Disinfectants



Abel Mint-Clean Deodorant

An excellent deodorant, especially effective in controlling odors that are bacterial in origin. Mixes readily with water and makes a clear stable solution. Has a pleasant mint odor. May be used through automatic floor scrubbing equipment. US EPA Registered.

CLNCMINT

Gal.

4/cs



Abel Surface Disinfectant Deodorant

A phenolic disinfectant deodorant that destroys odor causing bacteria on environmental surfaces. Eliminates odors in the air leaving a clean sanitary fragrance. EPA Registered.

AERDIS

15 oz.

12/cs



Envirox® H2Orange2 Concentrate 117

Multi-Purpose Cleaner-Sanitizer-Virucide-HBV. EPA registered. The Carpet & Rug Institute Seal of Approval. NSF registered. ONE cleaning product FOUR ready-to-use dilutions for ALL your cleaning needs. People safe, surface safe, color safe. For manual dilution, Spray Buddy and Blend Buddy I & II. Orange oil penetrates surfaces and breaks down oils. Biodegradable surfactants dissolve and suspend soil in water. Hydrogen peroxide oxidizes soil and stains, destroys odors, provides color safe bleaching and kills bacteria and viruses. Kills 99.99% of common bacteria and 99.9% of specified viruses, including Hepatitis B. Combine with Critical Care Disinfectant-Virucide-Fungicide for the best infection control program available today!

CLNH202B

Gal.

4/cs

EPA Registered Cleaning Supplies

**Abel-Cide Disinfectant Cleaner**

A multi-purpose, neutral pH, disinfectant cleaner with a Puri fragrance, kills HIV-1, (associated with AIDS), HBV (Hepatitis B virus). Safe on floors. Phosphate free and utilizes biodegradable surfactants. Use dilution 1:64. 4 per case. US EPA Registered.

CLNCIDE

Gal.

4/cs

**Diversey Morning Mist™ Neutral Disinfectant Cleaner**

Quaternary-based non-alkaline hospital grade disinfectant with excellent cleaning properties. 10 minute contact time. Bactericide and virucide. Kill MRSA and VRE. Blue green in color with a fresh scent. US EPA Registered.

CLNBMORN

5 L RTD®

ea

**Butchers® #77 G-Force® H2O2 Bathroom Cleaner**

Bathroom cleaner disinfectant formulated with proprietary hydrogen technology which cleans, disinfects, and deodorizes in one easy step. Active ingredient: Hydrogen Peroxide 4.25%. Eliminates odors, leaves bathrooms smelling clean and fresh. Cleaning/Disinfection: 1:64 (2 oz/gal). US EPA Registered.

CLNBH202BATHR
CLNBH202BATH5R

1.5 Gal RTD

2/cs

5 Gal RTD

ea

**Diversey Oxivir® Tb (U.S.) Disinfectant Cleaner**

Ready-to-use disinfectant cleaner based on proprietary hydrogen peroxide (AHP®) technology to deliver fast, effective cleaning performance. Disinfects in 60 seconds. Kills MRSA and Norovirus. US EPA Registered.

CLNBOXIVIR

32 oz.

12/cs

**Butchers® Morning Mist™ Non-Alkaline**

A non-alkaline disinfectant cleaner. Cleans away soil that other neutral disinfectants leave behind. Will not dull floor finish. Clean and fresh fragrance. Dilution: 1:64.

CLNBMORNCC

1.5 Gal. Command Center

2/cs

**Diversey Bath Mate™ RTU Acid Free Disinfectant Cleaner**

For daily washroom cleaning in hospitals, motels, hotels, nursing homes, business and industrial buildings, restaurants and food plants. Formulated with detergents and solvents. Quickly removes soap scum, body oils and lotions. US EPA Registered.

CLNBATH

32 oz.

12/cs

**Diversey Virex® II 256 Disinfectant**

A one-step, quaternary-based disinfectant cleaner and deodorant to clean and disinfect hard surfaces. Meets OSHA bloodborne pathogen standards. Dilution Rate: 1:256.

SCJ 3062637

1.5 L RTD®

2/cs

**Diversey Bath Mate™ RTU Acid Free Disinfectant Cleaner**

A non-acid, disinfectant washroom cleaner. Perfect for use in business and institutional buildings, including healthcare facilities. Green in color. Strong, lingering, fresh scent. Leaves washrooms smelling fresh longer. 1.5 gal., 2 per case. US EPA Registered.

CLNBATHCC

1.5 Gal.

2/cs

**Envirox® Concentrate 118®**

Powered by GNx2 Technology, it out performs conventional floor cleaning technology while raising the bar for health, safety and environmental impact. Heavy duty dilution for sanitizer/virucide/HBV. Light duty dilution 1 oz per gallon. NSF Listed. EPA Registered. For manual dilution, Eco-Blend. 4 per case.

CLNGNX2118

Gal.

4/cs

**Envirox® Critical Care™ Disinfectant**

Fungicide. Virucide. 30-second kill/24-hour residual kill. Odorless, no harsh disinfectant smell. Reduced toxicity, HMIS Health = 0. Ready-to-use. No sticky or dulling residue. US EPA Registered.

CLNH202CRITC

Qt.

6/cs

**Diversey Morning Mist™ Neutral Disinfectant Cleaner**

Quaternary-based non-alkaline hospital grade disinfectant with excellent cleaning properties. 10 minute contact time. Bactericide and virucide. Kill MRSA and VRE. Blue green in color with a fresh scent. US EPA Registered.

CLNBMORN

Gal.

4/cs

**NCL® Avistat-D™ Spray Disinfectant Cleaner**

This product is designed specifically as a general, ready-to-use cleaner and disinfectant. Effective against HIV, HBV, and TB. EPA registered. Non-acid, will not harm personnel or ruin surfaces. Long lasting odor, superior deodorization. Mountain Fresh fragrance. 12 per case.

CLNAVISTATD

Qt.

12/cs



FLRESNEU

NCL® Earth Sense® #21 Neutral Disinfectant Cleaner

A one-step disinfectant cleaner and deodorant. Designed for general cleaning, disinfecting, deodorizing. All surfaces must be thoroughly rinsed with potable water. US EPA Registered.

64 oz. Bottle 6/cs



CLNPNOD

NCL® Pine Quat Disinfectant Cleaner

Available in various sizes. A quaternary disinfectant cleaner, effective against a wide range of bacteria. Deodorizes, leaving a refreshing pine fragrance. Neutral pH feature. EPA registered; USDA Authorized Class C-1.

Gal. 4/cs



CLNSANIQ
CLNSANIQ5

NCL® Saniquat Disinfectant Sanitizer

Available in various sizes. For use in food processing plants, supermarkets, restaurants and hospitals. Can also be used as a disinfectant against HIV, HBV, HCV. Dilutes at 1:512 for sanitization. Does not require a potable rinse. US EPA Registered.

Gal. 4/cs
5 Gal. ea



CLNESHDDIS

NCL® Twin Power™ #17 HD Detergent/Disinfectant

Fortified, heavy duty disinfectant cleaner. Especially effective for removal of body oils and hard water deposits. Kills HIV-1 (associated with the AIDS virus). Contains our exclusive Sienna™ fragrance. 6 per case; Earth Sense® 1:64 (1/4 GPM). US EPA Registered.

64 oz. 6/cs



CLNESDIS

NCL® Twin Power™ #7 Disinfectant Cleaner

A multi-purpose, neutral pH germicidal detergent & deodorant effective in hard water up to 400 ppm in the presence of organic soil (5% blood serum). Contains exclusive Sienna™ fragrance; EPA registered. 1:256 dilution for mop & bucket. 6 per case.

64 oz. 6/cs



CLNPP201N1

PortionPac® Germicidal Detergents

Effective against a wide variety of bacteria such as Staph, Salmonella and Pseudomonas, HBV, MRSA, VRE, HIV-1 (the virus that causes AIDS) and fungi. Cleans, disinfects and deodorizes environmental surfaces such as floors, walls, toilet fixtures, tables, countertops, mirrors & non-invasive equipment. EPA registered.

Makes 1 Gallon 528/cs



CLN9
CLN9G1

Spray Nine® Multi-Purpose Cleaner/Disinfectant

Eliminates Salmonella choleraesuis, E. coli, Staphylococcus aureus, and other harmful germs in just 45 seconds. No other product has the versatility to remove really stubborn soils as quickly and effectively from so many surfaces. Spray Nine is known by millions of satisfied customers around the world as the "wonder cleaner" that delivers the double punch. A true tough task cleaner. Dirt-busting power coupled with hospital grade disinfection. Kills HIV-1, Influenza A2 and other viruses in 30 seconds. US EPA Registered.

22 oz. 12/cs
Gal. 6/cs

Bleach



CLOROX

Clorox® Concentrated Germicidal Bleach

This high-quality concentrated disinfectant kills a broad spectrum of microorganisms and is excellent for controlling mold and mildew in bathrooms. Use on other germ-prone surfaces around the house. US EPA Registered.

121 oz. 3/cs



BLEACH6

Pure Bright™ Disinfectant Bleach

5.25% sodium hypochlorite solution. US EPA Registered

Gal. 6/cs

Tile Cleaner



CLNTILEX

Commercial Solutions® Tilex® Instant Mildew Remover

Eliminates tough mold and mildew stains fast. Cleans tile, grout, toilets and fiberglass. Disinfects and kills germs with Clorox® bleach. US EPA Registered.

32 fl. oz. Spray Bottle 9/cs

Wipes And Dusters



PADBONM191
DSTMWAND

A & B Wiper Microfiber High Duster

Easy to use with 28" reach or add 71" telescopic handle for higher areas. Bendable Stainless Steel Wand. Velcro side opening for easy removal to launder. US EPA Registered.

Cover ea
Wand ea

EPA Registered Cleaning Supplies



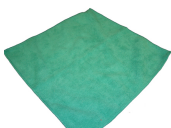
WIPMICGLSB

Blue

12/cs

A & B Wiper Microfiber Suede Window Cloth

Laundered hundreds of times. Lint free. Color coded for cross contamination. Holds up to 7 times their own weight in liquid. 16" x 16". 38 gram.



WIPMMICROG

Green

36 gram

12/cs

A & B Wiper Microfiber Terry

70% polyester, 30% polyamide. Microfiber terry towels are lint free. They are designed to pick up and hold dust, dirt and grime. Contribute to LEED points. They hold 7 times its weight in liquid. 12" x 12". US EPA Registered.



A & B Wiper Microfiber Towels

Microfiber terry towels are lint free. They are designed to pick up and hold dust, dirt and grime. They can be laundered hundreds of times and are color coded to prevent cross contamination. They hold 7 times its weight in liquid. Promotes green cleaning and water conservation. Contribute to LEED points. Green cleaning with microfiber products provides superior cleaning efficacy, reducing chemical and water usage. 70% polyester, 30% polyamide. 300 gsm. 16" x 16". US EPA Registered.

WIPMICROBL
WIPMICROGR
WIPMICROR
WIPMICROYL

Blue 49 gram
Green 49 gram
Red 49 gram
Yellow 49 gram

12/cs
12/cs
12/cs
12/cs

CPI Flexible Duster



DSTMWAVFLEX

ea

CPI Glass Cleaning Pad



HDMPADGL

10" x 5"

25/cs

Microfiber glass cleaning cloth sewn onto hook and loop backing with foam backing to absorb extra solution. Fits wallwash and trowel. Meets US EPA standards.



DSTMWAVCOV

50/cs

CPI Wave Microfiber Sleeve w/2" Strands

Green and white. Fits onto MFLEX duster. US EPA Registered.



DSTMWAV

ea

CPI WAVEDUST Microfiber Duster

Duster w/WAVE material, extendable handle 34" to 51". Head is removable and launderable. Green and white head. US EPA Registered.



DSTMWAVHD

ea

CPI WAVEDUST Replacement Head

Replacement head with 2 snaps, white and green. US EPA Registered.



TOWMICRO

23" x 15"

ea

Lambskin Microfiber Auto Drying Towel

Microfiber product designed for cleaning, polishing, and drying automobiles, RV's, boats, and general clean up. US EPA Registered.



Unger® MicroWipe™ 4000 Microfiber Cloths

Ideal for dusting, polishing and scrubbing. Double-stitched edges withstand repeated washing cycles and tough cleaning applications. Absorbs over six times its weight in water and collects fine dust through static charge when used dry. Color coded system reduces cross-contamination, improves performance and leads to cleaner facilities. 1500 wash cycles. Absorbency 5.2 oz. Durability 4000. Scrub factor 38. Highest quality superior-grade textile. Manufactured to withstand heavy-duty commercial washing cycles. Designed for facilities that clean in multiple shifts and 7 days a week. 16" x 15". US EPA Registered.

WIPUMICROB
WIPUMICROG
WIPUMICROR
WIPUMICROY

Blue 10/cs
Green 10/cs
Red 10/cs
Yellow 10/cs



WIPDIS6

75 ct.

6/cs

WipesPlus® Disinfecting Wipe

Gentle water based formula safe for plastic, laminates, metals, plexiglass screens and rubber. Tough enough to kill tuberculosis, bacteria, viruses and staph. Lint free and highly absorbent for better cleaning. Independently lab certified to quickly disinfect.

EPA Registered Cleaning Supplies



CPI Wave Pocket Mops

Available in various colors. Meets US EPA standards.

MOPMPOCB	18"	Blue	ea
MOPMPOCG	18"	Green	ea
MOPMPOCR	18"	Red	ea
MOPMPOCW	18"	White	ea



Diversey Pace® 40 Green Pad

High impact floor cleaning system with microfiber pads. Delivers rapid, high efficiency cleaning on all types of floors.

GREENGUARD® Certified System. Significantly reduces overall operating costs. Provides substantial environmental and ergonomic benefits. Meets US EPA standards.

MOPBMICRO40G			5/cs
--------------	--	--	------



Diversey Pace® 60 Microfiber Fine Cleaning Pad

High impact floor cleaning system with microfiber pads. Delivers rapid, high efficiency cleaning on all types of floors.

GREENGUARD® Certified System. Significantly reduces overall operating costs. Provides substantial environmental and ergonomic benefits. Meets US EPA standards.

MOPBMICROG	Green		5/cs
------------	-------	--	------

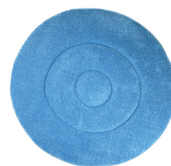


Diversey Pace® 60 Microfiber Heavy Duty Pad

High impact floor cleaning system with microfiber pads. Delivers rapid, high efficiency cleaning on all types of floors.

GREENGUARD® Certified System. Significantly reduces overall operating costs. Provides substantial environmental and ergonomic benefits. Meets US EPA standards.

MOPBMICROB	Blue		5/cs
------------	------	--	------



Impact® Microfiber Bonnet Pad

Designed for durable, deep cleaning of carpet. The microfiber grabs the dirt and traps it in the fibers. The bonnets are very absorbent. Carpets dry more quickly. Can be laundered.

PADBONM191	19"		6/cs
------------	-----	--	------



Unger SmartColor™ RoughMop ST45 Mops

Double sided. Cleaning power increased with scrub pad material on headband. Durability 4000. Meets US EPA standards.

MOPUHDB1	Blue		5/cs
MOPUHDG1	Green		5/cs
MOPUHDR1	Red		5/cs



Unger® Smart Color™ MicroMop 15.0

Heavy-duty 15 mm pile for stone and tile floors with grout lines. Features aggressive cleaning edges that clean with less water, less effort. Reduces bacteria by up to 96%. Durable, machine wash and dry up to 500 times. For use with Mop Holder SM40G. Meets US EPA standards.

MOPUMICRO	16"	Red	5/cs
-----------	-----	-----	------



Unger® Smart Color™ RoughMop ST30 Mops

Double sided. Cleaning power increased with scrub pad material on headband. Durability 4000. Strand Count: 22. Meets US EPA standards.

MOPUMDB1	Blue		5/cs
MOPUMDG1	Green		5/cs
MOPUMDR1	Red		5/cs
MOPUMDY1	Yellow		5/cs



Unger® SmartColor™ MicroMop 7.0 Mops

Medium-duty 7 mm pile for vinyl or sealed floors without grout lines. Features aggressive cleaning edges that clean with less water, less effort. Reduces bacteria by up to 96%. Durable, machine wash and dry up to 500 times. For use with MopHolder SM40G. Meets US EPA standards.

MOPUR1	16"	Red	5/cs
MOPUY1	16"	Yellow	5/cs

Loop Mop Heads



O'Dell 4000 Series All Purpose Cotton Synthetic Mopheads

4 ply all purpose cotton synthetic blend loop mops. This fiber blend offers a quality yarn at a modest price. Launder with care. Meets US EPA standards.

MOPMLG	Large	White	12/cs
--------	-------	-------	-------

ICEMELT



Safe Step® Pro Series® 960 Choice Formula Ice Melter

U.S. EPA design for the Environment certification. Patented formulation for maximum ice melting power. Melts ice down to -10° F. Contains MG 104®, which helps prevent refreezing up to 2 1/2 times longer than conventional ice melters. Safer on plants, concrete, pets, shoes and carpet. Safer to handle; won't harm skin or pets' paws.

DRYICESAFE50	50 lb. Bag		ea
--------------	------------	--	----

Extractors



Host® Freestyle™ ExtractorVAC®
Self-propelled, gliding action. So easy, anyone can use it! Portable! Separates for transport. Wheeled storage tray rolls easily from job to job. Retrofit kit available for T6 HOST machines. This unique machine separates without tools into different components-flexibility which allows the Freestyle to adapt to a variety of jobs. 15.5" W x 15" D x 42" H. Meets US EPA standards.

EQPHFREE

Extractor VAC w/M1021 Brush ea



Host® Liberator™ Extractor VAC™
The HOST Extractor VAC™ Liberator frees you from time-wasting trips to the janitor's closet for vacuums, spotters, carpet cleaning machines and pile lifters. Dimensions: 17" W x 13"D x 38" H. Shipping weight approximately 81 pounds. Includes brushes of choice & mounting bars for Caddy Packs. Meets US EPA standards.

EQPHLIB

ea



Sandia Sniper 12 Gallon Extractors
Features include: Induction motor cooling. Sandia's innovative air intakes use the vacuum's own cooling fan to pull cool outside air over the vacuum motors. This innovation reduces motor temperatures by up to 18%. The heated air pressurizes the motor cavity forcing the hot air to be expelled through the six slotted vents. Easy twist access port. Quick removal, won't freeze in place. Add an internal heater to any Sniper Extractor. Heats solution to 198°. Power may be split between two cords. Trigger sprayer holders for spotting chemicals and agitation brushes. Molded-in air deflector reduces turbulence within the recovery tank. Automatic vacuum restrictor. Angled vacuum cavity removes all liquids. Top mounted vents dissipates the hottest air. Carpet and Rug Institute Bronze SOA certified.

EQPSSNIPER2	2-Stage	200 PSI	ea
EQPSSNIPER3	2-Stage	300 PSI	ea
EQPSSNIPER3H	2-Stage	300 PSI	ea
EQPSSNIPER5H	2-Stage	500 PSI, w/Heat	ea



Windsor® Admiral™ 8
Powerful, high speed carpet cleaning. Adjustable handle with easy-to-use fingertip controls for superior maneuverability and operator comfort. 45" L x 17.5" W x 36" H. Brush Motor: 1/3 hp AC with circuit breaker protection. Vacuum Motor: Three stage, bypass, 1.5 hp. Carpet and Rug Institute SOA Gold Certified. IEQ Credit 3.4

EQPWADM

ea



Windsor® Cadet™ 7
Unmatched value in an easy-to-use, self-contained carpet extractor. Easy-to-use controls reduce operator fatigue. 41" L x 17.5" W x 34" H. 50' power cable. 1/3 hp, three-stage vac motor. Carpet and Rug Institute SOA Platinum Certified. IEQ Credit 3.4

EQPWCADET

ea



Windsor® Clipper DUO Extractor
Deep restorative and iCapsol encapsulating interim cleaning processes in one machine. Extends the time before resoiling occurs and reduces wicking. Vac motor: 3 stage, bypass, 1.5 hp, 100 cfm, 120" waterlift. Brush motor: 1/2 hp AC with circuit breaker protection. Cleaning path: 16". Carpet and Rug Institute SOA Platinum Certified. IEQ Credit 3.4

EQPWCLIPDUO

10 Gal. ea



Windsor® Clipper™ 12
Flip handle for push or pull operation and convenient fingertip controls increase productivity and operator comfort. 43" L x 22" W x 32.5" H. Brush Motor: 1/3 hp AC w/circuit breaker protection. Vac Motor: Three stage, bypass, 1.5 hp. Carpet and Rug Institute SOA Platinum Certified. IEQ Credit 3.4

EQPWCLIP

ea



Windsor® Commodore DUO Extractors
Multiple options in one machine, iCapsol interim cleanings, and deep extraction cleaning. Change from interim to deep cleaning process with the turn of a switch, no mechanical changeover needed. Floating dual counter-rotating brushes agitate and permeate the cleaners into both sides of the carpet nap for even, thorough cleaning and improved carpet appearance. No operator adjustment needed. The DUO machines provide exceptional maneuverability and visibility; their compact design makes it easy to operate in small areas. The deluxe model has chemical tanks which are 1.22 gallon and 0.33 gallon. With the interim method using the iCapsol encapsulating chemical, the carpet is dry and ready for traffic in approximately 20 minutes. Vac motor: one x 3 stage, 0.75 hp. Brush motor: 0.5 hp. Cleaning path: 20" dual counter-rotating brushes. IEQ credit 3.4.

EQPWCOMDUO3

Basic 215 AH ea

LEED Cleaning Equipment



Windsor® Commodore™ 20 Extractor

Exceptional maneuverability and compact design makes it easy to operate in small areas. Easy to use controls reduce training time. 49" L x 22" W x 41" H. Drive Motor: 1/8 hp (93 watts). Electrical System: 120 volt, 15 amp. Carpet and Rug Institute SOA Platinum Certified. IEQ Credit 3.4

EQPWCMD20

20 Gal.

ea



Windsor® Mini Pro™ 4 Extractor

Productively clean and freshen up carpet surfaces with less effort. Designed for minimal service. Quiet, lightweight and easy to use. Vacuum Shoe Width: 12.5" cast aluminum. Vacuum Motor: 3-stage, 1.5 hp (1130 watts). Air Flow Rate: 0.38 gpm at jet. Carpet and Rug Institute SOA Silver Certified.

EQPWEXP

10"

ea

Auto & Walk Behind Scrubbers



Hawk The Raptor 2014 Floor Machine

The Raptor, using a "green" process, has the ability to remove several layers of floor finish without water or chemicals. Pad Size: 20" x 14". 50' Cord. Power Source: 115V 60 Hz; Amp draw: 9.00. Motor/HP: 1.5 HP TEFC 1740 RPM, 180 frame. Meets Green Seal Standards (GS-42).

EQPHRAPTOR

ea

Rider Scrubbers



Windsor® Chariot® iScrub™ Stand Up Scrubbers

Cleaning function control switch easily allows the operator to select the appropriate transport or cleaning mode. Ability to clean in tight, congested spaces. Easy to transport around the building and cleans anywhere. Fits easily into any elevator. Reduces operator fatigue. EcoMode is a maintenance cleaning setting which scrubs with less battery usage, less water, less pressure and less noise which makes it ideal for day cleaning without disrupting workflow. EcoMode also increases productive cleaning time by offering a quieter, less intrusive "Day Cleaning" mode. Aqua-Mizer™ extends time between drain and refills by up to 50%. 26" iScrub has mechanically raised squeegee and scrubbing function dial with 2 nylon brushes and debris hopper. Clear, simple control panel significantly reduces training time and provides more consistent results. Full circle visibility for operator safety. Drive motor: 0.75 hp.

9.840-691.0

24" w/Pad Driver

195AH

ea



Windsor® Chariot™ iScrub 20X Deluxe Stand-Up Scrubbers

With a lower investment cost, higher production rate and simplicity of maintenance, the Chariot iScrub 20 meets and exceeds all expectations with up to 58% operational savings versus competitively sized walk-behind scrubbers. Designed with Windsor's Chariot Patented Stand-On Cleaning Technology that significantly increases productivity and cleaning quality. Swiveling no-adjustment squeegee, with Aqua-Mizer™ functionality that ensures 100% water pick up for dry, safe floors. Design and size that provides remarkable maneuverability, and best-in-industry 360° visibility that allows the operator to see more of the cleaning area. Intuitive control panel with two transport speeds and two operating speeds, and an easy-to-clean, fully accessible hygienic recovery tank. Quiet operation for daytime cleaning. Simple, intuitive control panel for easy operator training and use. External fill-port provides easier access to fill solution and water. Brush motor: .33 hp; Brush speed: 180 rpm. Vacuum motor: 2 stage, .63 hp. Electrical system: 36V, 3 x 130 AH.

EQPW20CHAR

20" Pad Driver 114AH, OB Charger

ea

Specialty



Dri-Eaz® Defendair® HEPA 500 Air Scrubber

Air scrubbers provide the particulate filtration that's essential to thorough restoration work. Provides true HEPA filtration at 500 CFM. Filter System: 2-stage with optional carbon filter. Delivers maximum clean air delivery rate. Connect up to 3 units for 1500 CFM on 1 power outlet.

EQPDEFEND

ea

LEED Cleaning Equipment



Windsor® Access™ Vacuums & Burnisher

Complete maintenance solution for carpet and hard floor. Easy access to small space cleaning. Carpet vacuuming, deep cleaning two-motor vacuuming power. HEPA filtration for improved indoor air quality. Lightweight and easy to maneuver in tight spaces. The Access body is a lightweight, portable canister vacuum for productive above-the-floor vacuum dusting and detail cleaning. Simplifies stair and furniture cleaning. Maintains shine on VCT and natural stone floors. Small size and unique flexible head design makes cleaning and polishing in small, congested areas simple. Cleans, vacuums and shines hard floor to eliminate the inconvenience of daytime mopping. Maintains natural shine on stone surfaces. Maintains shine on terrazzo and polished concrete. High performance, single stage, 1.4 hp (1000 watts), 92" waterlift, 102 cfm airflow. Injection molded, high impact ABS plastic housing. Dust Bag: Triple layer bag with 3.5 l, enclosed, top-load.

VACWFLEX12 12" Vacuum Only ea



Windsor® Compass™ 2 Surface Cleaning Machine

One machine, one purpose, one totally clean environment. Daily cleaning will completely remove soils and bacteria, leaving your facility "Compass Clean". Vac Motor: 900 watts, 2 stage. Pump Motor: 1/3 hp AC with circuit breaker protection. Electrical System: 120V, 14.3 amp.

EQPWCOMP2 ea



Windsor® iCapsol IM17 Mini Carpet Cleaner

Productively clean and freshen up carpet surfaces with less effort. Uses Windsor Red Carpet iCapsol Encapsulation Interim Cleaning Chemicals. 15.25" D x 45.5" Handle Height x 6" Deck Height x 18" W. 0.5 hp (370 watts) motor. 470 rpm brush speed.

EQPWIM17 17" ea

Portable Vacuum



ProTeam® MegaVac Vacuum

Available with various attachment kits. 698 sq. in. Intercept Micro Filter media, Four-Level Filtration. Includes 1 1/2" static-dissipating vacuum hose, 50' extension cord and 2 Micro Filters. 1221 watt/10.6 amp motor. Weighs 11 lbs. 100" static lift, 150 cfm.

VACPMEGA w/101336 Attachment Kit ea



ProTeam® Super Coach Pro 10 Backpacks

Triangular shape combined with innovative articulating harness has resulted in a vacuum that feels more like a part of your body. Weight of backpack is distributed to the natural center of gravity, so you have better balance no matter how you move. The die-cast aluminum tri-latch system assures air performance. Four level filtration with HEPA captures 99.97% of particulates 0.3 microns or larger, improving IAQ. Four Level Filtration w/HEPA: 1372 sq in total area. Includes 1 1/2" static-dissipating vacuum hose, a 50' extension cord and two intercept Micro® filters. Intercept Micro Filter Media: 10 Qt. Airflow: 159 CFM; Static lift: 96". Power: 1108 W; Amperage: 9.5 A. Motor: Single, 120V; Decibel: 65.8 dBA.

VACPPRO10 w/107100 Attachment Kit ea



ProTeam® Super Coach Pro 6 Backpacks

Triangular shape combined with innovative articulating harness has resulted in a vacuum that feels more like a part of your body. Weight of backpack is distributed to the natural center of gravity, so you have better balance no matter how you move. The die-cast aluminum tri-latch system assures air performance. Four level filtration with HEPA captures 99.97% of particulates 0.3 microns or larger, improving IAQ. Four Level Filtration w/HEPA: 1054 sq in total area. Includes 1 1/2" static-dissipating vacuum hose, a 50' extension cord and two intercept Micro® filters. Intercept Micro Filter Media: 6 Qt. Airflow: 159 CFM; Static lift: 96". Power: 1108 W; Amperage: 9.5 A. Motor: Single, 120V; Decibel: 65.8 dBA.

VACPPRO6 w/107100 Attachment Kit ea



ProTeam® Super CoachVac HEPA Backpack Vacuums

The Super CoachVac HEPA is a productivity powerhouse designed to tackle the most demanding cleaning challenges. 10 quart filter capacity designed to handle high square-footage areas that require the utmost cleanliness. Airflow: 150 CFM; Static lift: 100". Intercept Micro™ filter media: 698 sq in.

VACPCOACHC w/107098 Xover Tool Kit B ea



ProTeam® Super QuarterVac HEPA Backpack Vacuums

Available with various attachment kits. The quality built Super QuarterVac HEPA is a formidable tool for battling poor indoor air quality. Airflow: 150 CFM; Static lift: 100". Intercept Micro™ filter media: 496 sq in.

VACPBACHC w/107098 Attachment Kit ea

LEED Cleaning Equipment



ProTeam® TailVac® Vacuums

Available with various attachment kits. Four-level Filtration™, 496 sq in. intercept Micro Filter media, 781 square inch total media. Includes a 3' to 1' stretch vacuum hose. Weighs 8 lbs; 112 CFM airflow. 50' power cord and two micro filters.

VACP100

w/107100 Attachment Kit

ea

Specialty Vacuum



Windsor® Chariot® iVacuum Stand Up Vacuums

Wide cleaning path provides maximum cleaning coverage in a minimal amount of time. The filtration bags contain dust inside the machine, creating a healthier environment for the operator and the people in the facility. The deluxe model includes 13" edge cleaning brush. Floating suspension system provides consistent brush contact over uneven surfaces for unmatched cleaning with no operator adjustment needed. Brush Motor: 1 x .75 hp. Drive Motor: .75 hp (560 watts).

9.840-490.0

34" w/Side Broom

195AH

ea

Upright Vacuum



Enviro-Clean 14" Upright Vacuum w/HEPA

VACCFR14EC

ea



Hoover® Insight 100 Bagged Upright

Disposable auto seal bag traps dust and reduces emissions. HEPA filtration traps 99.97% of particles down to 0.3 microns. 2 year warranty. Black. Motor: 10.0 amps; 4 level height adjustment. 50' quick change cord reduces down time. 13" nozzle width cleans more carpet in one pass.

VACH13

13"

ea



ProTeam® ProForce 1200XP Upright Vacuum

Designed for advanced versatility allowing the 12" powerhead to reach even smaller spaces. Watts: 924; Weight: 18 lbs.; Airflow: 96 CFM. Static Lift: 84"; Amps: 11 A Dual motor. Intercept Micro Filter: 248 sq in.

VACP1200XP

ea



Tornado® CK 14/1 Pro Commercial Upright Vacuum

Combines affordability, superior airflow, the benefits of an enclosed bag system, on-board tools, and true HEPA filtration for healthier indoor air quality. Vac motor: 1200 W/10 A; Power: 120V/60 Hz. Filtration System: 99.97% at 0.3 micron; Weight: 20.6 lbs. Airflow: 120 cfm; Power Cord: 50'; Capacity: 3.8 Qt.

VACTHEPA

14"

ea



Windsor® Sensor XP Upright Vacuums

Available 12" to 18". The Sensor is the only vacuum to offer superior upright vacuuming technology that protects itself from operator neglect. 2-stage, 1.6 hp, 1200 watt, 90" waterlift, 105 cfm airflow. 99.97% at 0.3 microns, 76"[2] filtration area. 120 volt, 60 cycle.

VACWXPSEN12

12"

ea

VACWXPSEN15

15"

ea



Windsor® Sensor® S Upright Vacuum

High efficiency filtration traps 99.6% of contaminants down to 0.3 microns for improved indoor air quality. Power, reliability, value - with 41% more cleaning power. Vac Motor: High performance, 2-stage, 1.6 hp, 1200 watts, 90". Brush Speed: 5400 brush contacts per minute, 2700 rpm. Dust Bag: Triple layer w/323"[3] enclosed, top-loading.

VACWSENS12

12"

ea

VACWSENS15

15"

ea



Windsor® Versamatic® Commercial Upright Vacuums

For years, the Versamatic vacuum has provided cleaning professionals with the cleaning performance and dependability they need to do their job. Versamatic's 1,000 watt vacuum motor and long, trouble-free service life have made this vacuum the most popular 2-motor upright in the cleaning industry. In a single pass, 1000 watt vacuum motor and separate brush motor allow you to clean deep into the carpet and remove dirt that can damage your carpet. 48" H x 14" W; Electrical: 120V, 60 Hz. Vacuum Motor: 1000 watt, 80" waterlift, 105 cfm.

VACWVS18

18"

ea



Windsor® Versamatic® Plus Upright Vacuums

Convenient pull-out wand with handle, increased hose length, and on-board accessory tools increase efficiency of detail cleaning. Powerful 1,000 watt motor picks up more dirt in a single pass. Electronic control system maintains consistent motor speed and torque. 1000 watt, 80" waterlift, 105 cfm.

EQPWVSP14	14"	ea
EQPWVSP18	18"	ea

Wide Vacuum



Windsor® NuWave Wide Area Vacuum

Dual, counter-rotating brushes agitate, lift and clean both sides of the carpet nap, removing 50% more soil on one pass. Brush motor: .5 hp. Vacuum motor: 2 x 1.1 hp. Air flow rate: 224 cfm.

1.012-533.0	26"	ea
-------------	-----	----

Vacuum Accessories



CleanMax Disposable Bag For CleanMax Wide Area Vacuum

VACTWIDEBAG	1/10/cs
-------------	---------



ProTeam® Intercept Micro Filter For Super Coach Pro 6

10/pk.

VACPBAGP6	1/10/cs
-----------	---------



ProTeam® Intercept Micro Replacement Filter

Fits Super Coach Pro HEPA 10. pack of 10.

VACPBAGP10	1/10/cs
------------	---------



ProTeam® Intercept™ 10 Qt. Micro Filter

Use with CoachVac™, Super CoachVac™ and MegaVac.

VACPBAGSC	1/10/cs
-----------	---------



ProTeam® Intercept™ 6 Qt. Micro Filter

Use with QuarterVac™, TailVac™ and AviationVac.

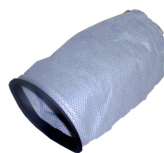
VACPBAG	1/10/cs
---------	---------



ProTeam® Intercept™ Micro Filter

Fits QuietPro CN HEPA, ProClean filtration media - 698 sq in./10 qt.

VACPRUNBAG	1/10/cs
------------	---------



ProTeam® Micro Cloth Filter

Use with CoachVac, Super CoachVac™, MegaVac and LineVac™.

VACPBAGC	ea
----------	----



ProTeam® Micro Cloth Filter

Use with QuarterVac™, TailVac™ and AviationVac. 6 Qt.

VACPCDBAG	ea
-----------	----



ProTeam® Micro Filter For ProForce 1200XP, 1500 and 1500XP

For use with 1200XP, 1500 and 1500XP models. One pack of 10.

VACPPROBAG	1/10/cs
------------	---------



Tornado® Paper Collection Bag for CKLW13

6 pack.

VACTBAG	ea
---------	----



Windsor® Cloth Bag For VSP and Sensor® Models

VACWBAGC	ea
----------	----



Windsor® Disposable Vac Bag

Package of 10 paper bags with 98% filtration (to 0.3 microns).

VACWBAGW	10 Pk.	ea
----------	--------	----

LEED Cleaning Equipment



VACWBAGF

**Windsor® Dust Bag For Flexamatic®
FM12 & FM15**
3 Ply.

1/10/cs



VACWBAGV

Windsor® Dust Bags
For VS & VSE Models Only.

Case of 30 Packs of 10

30/10/cs

**Windsor® Vac Pac Replacement Paper Bags For VP6
Only**

VACWBAGVP6

1/10/cs



VACWBAGS

Windsor® VSP Dust Bags
For VSP and Sensor® Models. Case of 25
Packs of 10; Total Count: 250.

25/10/cs

EPA Compliant Liners

Low Density



100% Recycled Can Liner

LIN54482B	54 x 48	Black	2 mil	100/cs
------------------	---------	-------	-------	--------

Low Density Can Liners

Available in various sizes, mils and colors.

LIN24241	15 x 9 x 24	Black	1 mil	500/cs
LIN24331	15 x 9 x 33	Black	1 mil	500/cs
LIN333916	33 x 39	Black	1.50 mil	100/cs
LIN33402	33 x 39	Black	2 mil	100/cs
LIN354415C	35 x 44	Clear	1.5 mil	150/cs
LIN36602	36 x 58	Black	2 mil	100/cs
LIN374415C	37 x 44	Clear	1.5 mil	200/cs
LIN3660150	38 x 58	Black	1.5 mil	100/cs
LIN36603	38 x 58	Black	2.6 mil	100/cs
LIN4048150	40 x 46	Black	1.5 mil	100/cs
LIN40482	40 x 46	Black	2 mil	100/cs
LIN404815F	40 x 48	Black	1.5 mil	100/cs
LIN40482C	40 x 48	Clear	2 mil	125/cs
LIN44482	43 x 47	Black	2 mil	100/cs

High Density



High Density Roll Can Liners

Available in various sizes, microns and colors.

LIN23HD	24 x 23	Clear	5 mic	1000/cs
LIN24HDB	24 x 24	Black	6 mic	1000/cs
LIN24HD	24 x 24	Clear	6 mic	1000/cs
LIN24HHD	24 x 24	Clear	8 mic	1000/cs
LIN33LHDB	24 x 33	Black	6 mic	1000/cs
LIN33LHD	24 x 33	Clear	6 mic	1000/cs
LIN33HHD	24 x 33	Clear	8 mic	1000/cs
LIN37LHD	30 x 36	Clear	7 mic	500/cs
LIN37MHDB	30 x 37	Black	10 mic	500/cs
LIN37MHD	30 x 37	Clear	10 mic	500/cs
LIN37HHD	30 x 37	Clear	13 mic	500/cs
LIN40HHDX	33 x 40	Clear	11 mic	500/cs
LIN40EXHHD	33 x 40	Clear	16 mic	250/cs
LIN60HHD	36 x 60	Clear	14 mic	200/cs
LIN46MHD	40 x 46	Clear	11 mic	250/cs
LIN46EXHHD	40 x 46	Black	15 mic	250/cs
LIN46EXHHD	40 x 46	Clear	15 mic	250/cs
LIN48MHDB	40 x 48	Black	12 mic	250/cs
LIN48MHD	40 x 48	Clear	12 mic	250/cs
LIN48HHD	40 x 48	Clear	14 mic	250/cs
LIN48EXHHD	40 x 48	Clear	16 mic	250/cs
LIN4348EXHHD	43 x 48	Clear	16 mic	200/cs

1 Ply Bath Tissue



TTV5501

Von Drehle Blue Mist® Bath Tissue

Available in various sizes. Green Seal™ certified. 1000/1-Ply.

4.5" x 3.6"

96/cs



WAU 14800

WausauPaper® EcoSoft™ Green Seal™ Tissue

Green Seal™ certified. Made with de-inking and bleaching processes free of chlorine and other harmful chemicals. 1 ply. Use Dispenser: 72200. 1,000 sheets per roll, 48 rolls per case.

4 3/8" x 3 3/4"

48/cs

2 Ply Bath Tissue



TTG2520

Georgia-Pacific Cormatic® Bathroom Tissue

Designed to reduce maintenance time, minimize outages and reduce waste. Ideal for high-traffic areas, office buildings, healthcare and foodservice facilities. 2 Ply embossed, white. Soft, absorbent, durable and thick. 1000 sheets per inner pack, 36 rolls per pack.

3.95" x 4.05

White

36/cs



TTV5022

Von Drehle Feather Soft® 2 Ply Bath Tissue

Biodegradable premium bath tissue disintegrates rapidly, making it safe for use in septic systems, boats and motor homes. The ideal choice for customers who want just-like-home quality in an environmentally responsible product. 100% recycled fiber. Consistently bright, soft and absorbent.

4.5" x 3.6"

96/cs



TTB509

TTB558

WausauPaper® DublNature® Single Roll Bath Tissue

Features rounded quilt and floral embossing. Green Seal™ certified. DublNature® bath tissue made with Fusion™ formation offers unparalleled plushness, softness and brightness. Fusion™ formation tissue is bright white with floral quilt embossing for a home-away-from-home experience.

4" x 3 3/4"

96/cs

4" x 4"

80/cs



TTB59890

WausauPaper® Dubl-Nature® Universal Tissue

Dubl-Nature® Green Seal® certified embossed universal tissue is made from a superior grade of 100% recycled wastepaper. It contains up to 25% post-consumer waste content. Ideal for class A office buildings, luxury hotels, upscale restaurants, green buildings and hotels, government, and colleges or universities. Attractive "floral" embossing. Exceptional brightness and absorbency. 2 Ply.

4 3/8" x 3 3/4"

80/cs



TTB540

WausauPaper® EcoSoft™ Double Ply Universal Tissue

100% recycled. Embossed for softness. Designed for those customers who support the recycling movement and request tissue that helps create a cleaner environment. Standard Core; 2 ply. Use Dispenser: 72200.

4" x 3 3/4"

96/cs



TTB619

WausauPaper® EcoSoft™ Green Seal® OptiCore® Tissue

This quality tissue is 100% recycled and exceeds EPA guidelines for post-consumer waste. Embossed. Environmentally preferable packaging. 2 Ply. Controlled-use tissue w/OptiCore™ 2-part core technology. Use Dispenser: 80200, 80300, 82300. 865 sheets per roll, 36 rolls per case.

3 3/4" x 4"

36/cs



TTB549

WausauPaper® EcoSoft™ Green Seal™ Tissue

Green Seal® 100% recycled universal tissue. Certified by Green Seal, Inc. in Washington, DC. Meets environmental standards. 2 Ply. Use Dispenser: 72200. 500 sheets per roll, 96 rolls per case.

4 3/8" x 3 3/4"

96/cs



TTB60090

WausauPaper® EcoSoft™ OptiCore® Controlled Tissue

EcoSoft™ High-Capacity OptiCore® Tissue surpasses the look and feel of typical high-capacity tissues so you don't have to trade capacity for quality. Double ply. Sheets per roll: 2000.

3 3/4" x 3 1/2"

12/cs

Green Seal Paper

Facial Tissue



WausauPaper® EcoSoft™ Green Seal® Facial Tissue

Offers softness and absorbency. Made of 100% recycled fiber, meets EPA guidelines, and is certified as environmentally preferable by Green Seal, Inc. 2 Ply; 8" x 8". Contains a minimum of 10% post-consumer waste.

FTB150	160 ct.	2 Ply	30/cs
WAU 15000	160 ct.	2 Ply	30/cs

Jumbo Tissue



Von Drehle Preserve® Jumbo Roll Tissue

Made from 100% recycled fiber. Green Seal™ Certified. With fewer refills required, maintenance time is reduced up to 90%, and the larger roll helps control pilferage. A perfect combination of quality and economy, these economically priced jumbo rolls are ideal for high-traffic locations. Tissue will not clog plumbing, safe for septic systems.

TTV2109	2000'	1 Ply	12/cs
TTV4112	4000'	1 Ply	6/cs
TTV2750	750'	2 Ply	12/cs
TTVJRT	800'	2 Ply	12/cs
TTV1209	1000'	2 Ply	12/cs
TTV2212	2000'	2 Ply	6/cs

WausauPaper® EcoSoft™ 9" Jumbo Universal Tissue

Available 1 ply and 2 ply. 100% recycled and meets EPA guidelines for post-consumer wastepaper content. Jumbo tissue has a 9-inch diameter and is ideal for heavy traffic facilities. Contains a minimum of 20% post-consumer waste, which meets EPA guidelines. Embossed for softness. Each roll equal to 5.3 rolls standard tissue.

TTB2001	3 7/8" x 2000'	1 Ply	12/cs
TTB1002	3 1/2" x 1000'	2 Ply	12/cs

KC Scott® 100% Recycled JRT Junior Bathroom Tissue

Made from 100% recycled fiber, this product does not use chlorine or chlorine-containing compounds in bleaching and/or de-inking process. Green Seal certified.

KCC 67805	3.55" x 1000'	White	2 Ply	12/cs
KCC 67223	3.55" x 2000'	White	1 Ply	12/cs



Toilet Seat Covers & Dispenser



WausauPaper® EcoSoft™ Green Seal™ Toilet Seat Cover

These toilet seat covers provide maximum sanitary protection and are convenient and easy to use. Green Seal certified seat covers are 100% recycled. Contain 20% post-consumer waste. 14 1/2" x 17". Use Dispenser: 19510.

TSEATBW				20/250/cs
----------------	--	--	--	-----------

Center Pull Towels



Von Drehle Preserve® Center Pull Towels

Each roll is perforated to deliver only one clean, dry, germ free sheet at a time. Controls usage and reduces waste. With the hands free dispenser, you use only the towel you touch, eliminating contamination. Ideal for restrooms, kitchens, food-preparation areas and other high-traffic locations where sanitation is important.

TOWV320	320'	White	2 Ply	12/cs
TOWV6602T	660'	White	2 Ply	6/cs

Household Towels



WausauPaper® EcoSoft™ Green Seal® Roll Towels

This EcoSoft™ Green Seal® household towel is heavily embossed for the highest level of absorbency and performance. This household toweling is 100% recycled, contains up to 49% post-consumer waste, and is made with de-inking and bleaching processes free of chlorine or other harmful chemicals. Sheet Size: 11" W x 9" L.

TOWB418		85 ct.		30/cs
----------------	--	--------	--	-------



WausauPaper® EcoSoft™ Household Roll Towels

100% recycled and contains a minimum of 40% post-consumer waste, which meets EPA guidelines. This household toweling is heavily embossed for maximum absorbency and performance, with the wet strength needed for use in business and industry. 11" x 9".

WAW 41000	90 ct.	2 Ply		30/cs
WAW 40000	100 ct.	2 Ply		30/100/cs



WausauPaper® Sirus® Roll Towels

This soft and absorbent toweling is heavily embossed and is 100% recycled. Designed with packaging that is compliant for retail sale. Ideal for environmentally conscious consumers.

WAW 40700	70 ct.	2 Ply		30/cs
------------------	--------	-------	--	-------

C-Fold Towels



WausauPaper® EcoSoft™ Green Seal™ C-Fold Towel

100% recycled, exceeds EPA guidelines for post-consumer wastepaper content, and features environmentally preferable packaging. Use Dispenser: 53200, 53500.

TOWB493	10 1/8" x 13"	Natural White	12/200/cs
WAW 49300	10 1/8" x 13"	Natural White	12/200/cs

Multifold Towels



Von Drehle Preserve Multi-Fold Towels

You don't have to choose between recycled paper & superior performance. These soft, absorbent towels have a drying strength that reduces consumption. Packed for easy handling and storage.

TOWV548W	9.25" x 9.25"	White	16/250/cs
TOWV548K	9.25" x 9.5"	Kraft	16/250/cs



WausauPaper® Artisan™ Multifold Towel

Green Seal® certified. Made from superior quality recycled fibers providing premium appearance and comfort while supporting sustainability initiatives. Use dispenser: 53200, 53500.

TOWB04220	9 1/8" x 9 1/2"	White	12/250/cs
------------------	-----------------	-------	-----------



WausauPaper® DublNature® Multifold Towel

Green Seal® Certified. DublNature® multifold towels are designed for performance and offer superior strength, absorbency and softness. Exceptional brightness and absorbency.

TOWB48140	9 1/8 x 9 1/2		16/250/cs
------------------	---------------	--	-----------



WausauPaper® DublNature® OptiFold™ ES

Green Seal® Certified. DublNature® OptiFold® ES towels are designed for performance and offer superior strength, absorbency and softness.

TOWB48640	8 x 9 1/2		12/250/cs
------------------	-----------	--	-----------



WausauPaper® DublNature® OptiFold™ Towel

Green Seal® Certified. DublNature® OptiFold® towels are designed for performance and offer superior strength, absorbency and softness.

TOWB48440	10 1/4 x 9 1/2		12/250/cs
------------------	----------------	--	-----------



WausauPaper® EcoSoft™ Green Seal® Multifold Towels

Designed for those seeking to achieve green status for their facility and purchase folded towels produced with methods less harmful to the environment. Contains minimum of 50% post-consumer wastepaper. Made with a de-inking process free of chlorine and other harmful chemicals. 100% recycled, exceeds EPA guidelines for post-consumer wastepaper content, and features environmentally preferable packaging. Green Seal™ Certified. Use Dispenser: 53200, 53500.

TOWB483	9 1/8" x 9 1/2"	Natural White	16/250/cs
----------------	-----------------	---------------	-----------



WausauPaper® EcoSoft™ Multifold Towels

This quality multifold towel is designed for those customers who support the recycling movement and request toeling that helps create a cleaner environment. This toeling is ideal for lodging/hospitality properties and commercial buildings. Made entirely from recovered fibers. 100% recycled. Contains a minimum of 40% post-consumer waste, which meets EPA guidelines. Use Dispenser: 53200, 53500.

TOWB480	9 1/8" x 9 1/2"	Natural	16/250/cs
TOWB485	9 1/8" x 9 1/2"	White	16/250/cs



WausauPaper® EcoSoft™ OptiFold™ ES Towel

Designed for those seeking to achieve green status for their facility. It is made of 100% recycled fiber with up to 73% post-consumer waste. Use dispenser: 53200, 53500, 53800.

TOWB48790	8" x 9 1/2"	Natural White	16/250/cs
------------------	-------------	---------------	-----------



White Multifold Towel

16 slves/250-4000/cs.

TOWVMF4B			16/250/cs
-----------------	--	--	-----------

Singlefold Towels



WausauPaper® EcoSoft™ Green Seal™ Singlefold Towel

100% recycled, exceeds EPA guidelines for post-consumer wastepaper content, and features environmentally preferable packaging. Green Seal® Certified. Use Dispenser: 53200, 53500.

TOWB473	9" x 10"	Natural White	16/250/cs
----------------	----------	---------------	-----------

Green Seal Paper



WausauPaper® EcoSoft™ Singlefold Towels

Designed for those customers who support the recycling movement and request toweling that helps create a cleaner environment. Made entirely from recovered fibers. 100% recycled. Contains a minimum of 40% post-consumer waste, which meets EPA guidelines. Use Dispenser: 53200, 53500.

TOWB470 9" x 10" Natural 16/250/cs

Roll Towels



Georgia-Pacific enMotion® High Capacity EPA Roll Towels

High capacity, high quality, roll towels for enMotion classic or Impulse 10 automated, electronic roll towel systems. These cost-effective, high-quality, EPA CPG compliant for minimum post consumer waste percent roll towels are specifically designed to be used with our innovative wall mounted enMotion® touch-free dispensers to provide reliable towel dispensing at the wave of a hand. Each high-capacity roll provides up to 800 hand dries for continuous service and reduced service visits. One-at-a-time, touch free dispensing reduces usage and minimizes the risk of cross contamination.

TOWG89480 10" x 800' Brown 6/cs
TOWG8947 10" x 800' White 6/cs



Georgia-Pacific enMotion® Premium Touchless Roll Towel

Specifically designed to be used with our innovative 59466 enMotion recessed automated towel dispenser to provide reliable towel dispensing at a wave of a hand. Can provide over 500 hand dries for continuous service. Prevents cross-contamination.

TOWG89410 8.25" x 420' 6/cs



Georgia-Pacific Envision® High Capacity Roll Towel

Designed to fit into a wide range of everyday dispensers, Envision® high capacity white economy hardwound towels help you keep costs under control. 7.87" x 800'; Green Seal® standard GS-1; EcoLogo®. Use dispensers 54338, 56201; White.

TOWG26601 7.87" x 800' 1 Ply 6/cs



Georgia-Pacific SofPull™ Hardwound Roll Paper Towel

Embossed 1 ply brown hardwound roll towels offer softness and absorbency. These towels are designed for use in the SofPull™ hardwound roll towel dispenser. Use with: 59489; EcoLogo® Certified.

GPC 26480 7.87" x 1000' Brown 6/cs
TOWG26480 7.87" x 1000' Brown 6/cs



Von Drehle Heavy Weight Hardwound Towel

These bulky, thirsty towels are soft, strong and absorbent, yet competitively priced. Non-perforated. White. Core Size: 1.625". 28 lb. basis weight. Green Seal™ Certified.

TOWV828B 7.9" x 600' White, 28 lb. 12/cs



Von Drehle Heavy Weight Hardwound Towel

These bulky, thirsty towels are soft, strong and absorbent, yet competitively priced. Non-perforated. White. Core Size: 1.75". 28 lb. basis weight. Green Seal™ Certified.

TOWV810B 10" x 600' White, 28 lb. 6/cs



Von Drehle Preserve® Hardwound Towels

Green Seal™ Certified. A universal core permits use with our large selection of dispensers and with most others on the market. These bulky, thirsty towels are soft, strong and absorbent, yet competitively priced. Non-perforated. 100% recycled.

TOWV860B 7.9" x 600' White 12/cs
TOWV880B 7.9" x 800' White 6/cs
TOWV816B 10" x 800' White 6/cs



Von Drehle White Hardwound Roll Towel

Made in the U.S.A, 100% recycled. Chlorine-free technology. Green Seal® certified. Ply: 1. Roll width: 7.9"; Core Size: 1.25.

TOWV880BP 7.9" x 800' 6/cs



WausauPaper® Artisan™ Controlled Roll Towel

Designed for a premium hand drying experience. Toweling is brilliant white for a clean, hygienic appearance and helps to reinforce an upscale image. Green Seal® certified. Cloth-like hand feel, strong and absorbent.

TOWB30620 8" x 600' 6/cs

Green Seal Paper



WausauPaper® DublNature® Controlled Roll Towels

Offer the softness and strength needed to elevate your hand-drying experience. Features a unique weave pattern creating highly absorbent towels so fewer are needed per hand dry. Exceptional brightness. Made from 100% recycled fibers and Green Seal™ certified. Cloth-like hand feel. White.

TOWB345	8" x 450'	12/cs
TOWB31040	8" x 1000'	6/cs



WausauPaper® DublNature® Universal Roll Towels

Offer the softness and strength needed to elevate your hand-drying experience. Features a unique weave pattern creating highly absorbent towels so fewer are needed per hand dry. Exceptional brightness. Made from 100% recycled fibers and Green Seal™ certified. Cloth-like hand feel. White.

TOWB44040	8" x 1000'	6/cs
-----------	------------	------



WausauPaper® EcoSoft™ Green Seal® Control Roll Towels

Green Seal® 100% recycled controlled roll towels. Natural towels contain up to 82% post-consumer waste; natural white towels contain up to 73% post-consumer waste. Certified by Green Seal, Inc. in Washington, DC. Meets environmental standards. EcoSoft™ Green Seal® controlled roll towels are 100% recycled and exceeds EPA guidelines for post-consumer wastepaper content.

TOWB314	8" x 800'	Natural White	6/cs
TOWB31000	8" x 1000'	Natural	6/cs



WausauPaper® EcoSoft™ Universal Green Seal Roll Towels

Green Seal® 100% recycled 8" universal roll towels. Certified by Green Seal, Inc. in Washington, DC. Meets environmental standards. Green Seal®. Contains a minimum of 40% post-consumer waste, which meets EPA guidelines. Can be dispensed through universal roll towel dispensers. 1.9" universal core; Use dispenser: 16000, 16300, 16500.

WAU 46300	8" x 425'	Natural White	12/cs
TOWB458	8" x 800'	Natural	6/cs
WAU 45800	8" x 800'	Natural	6/cs
TOWB459	8" x 800'	Natural White	6/cs



WausauPaper® EcoSoft™ Universal Roll Towels

Various sizes available. 100% recycled. Contains a minimum of 40% post-consumer waste, which meets EPA guidelines. Can be dispensed through universal roll towel dispensers.

TOWB460	8" x 425'	Natural	12/cs
---------	-----------	---------	-------

EPA Compliant Paper

1 Ply Bath Tissue



TTV5501

Von Drehle Blue Mist® Bath Tissue

Available in various sizes. Green Seal™ certified. 1000/1-Ply.

4.5" x 3.6"

96/cs



TTG198

Georgia-Pacific Envision® Bathroom Tissue

Emboss provides upscale look and feel. Same paper bulk as conventional 2-ply bathroom tissue. Breaks down quickly to avoid clogging. 1 ply. 80 rolls per pack, 550 sheets per inner pack count.

4.5" x 4.05"

White

80/cs



TTB140

WAW 14000

WausauPaper® EcoSoft™ Universal Tissue

This one-ply EcoSoft™ universal tissue is embossed and ideal for heavy traffic facilities and commercial buildings/properties. Designed for those customers who prefer recycled tissue that helps create a cleaner environment. 100% recycled and contains a minimum of 20% post-consumer waste, which meets EPA guidelines. Embossed for softness. Standard Core. Use Dispenser: 72200.

4" x 3 3/4"

96/cs

4" x 3 3/4"

96/cs

2 Ply Bath Tissue



TTG2520

Georgia-Pacific Cormatic® Bathroom Tissue

Designed to reduce maintenance time, minimize outages and reduce waste. Ideal for high-traffic areas, office buildings, healthcare and foodservice facilities. 2 Ply embossed, white. Soft, absorbent, durable and thick. 1000 sheets per inner pack, 36 rolls per pack.

3.95" x 4.05

White

36/cs



TTV5022

Von Drehle Feather Soft® 2 Ply Bath Tissue

Biodegradable premium bath tissue disintegrates rapidly, making it safe for use in septic systems, boats and motor homes. The ideal choice for customers who want just-like-home quality in an environmentally responsible product. 100% recycled fiber. Consistently bright, soft and absorbent.

4.5" x 3.6"

96/cs



TTB540

WausauPaper® EcoSoft™ Double Ply Universal Tissue

100% recycled. Embossed for softness. Designed for those customers who support the recycling movement and request tissue that helps create a cleaner environment. Standard Core; 2 ply. Use Dispenser: 72200.

4" x 3 3/4"

96/cs



TTB619

WausauPaper® EcoSoft™ Green Seal® OptiCore® Tissue

This quality tissue is 100% recycled and exceeds EPA guidelines for post-consumer waste. Embossed. Environmentally preferable packaging. 2 Ply. Controlled-use tissue w/OptiCore™ 2-part core technology. Use Dispenser: 80200, 80300, 82300. 865 sheets per roll, 36 rolls per case.

3 3/4" x 4"

36/cs



TTB549

WausauPaper® EcoSoft™ Green Seal™ Tissue

Green Seal® 100% recycled universal tissue. Certified by Green Seal, Inc. in Washington, DC. Meets environmental standards. 2 Ply. Use Dispenser: 72200. 500 sheets per roll, 96 rolls per case.

4 3/8" x 3 3/4"

96/cs



GPC 19375

TTG375

Georgia-Pacific Compact® Coreless

Meets or exceeds EPA Comprehensive Procurement Guidelines for minimum post consumer recycled fiber content percent. Decreases service intervals and reduce risk of run-out. 2 ply. 1000 sheets per roll.

3.85" x 4.05"

White

36/cs

3.85" x 4.05"

White

36/cs



GPC 19378

Georgia-Pacific Compact® Coreless High Capacity Tissue

Comfort of 2-ply softness with reliable performance you can count on. Roll Diameter 5.75". EPA compliant. 18 rolls, 1,500 sheets per roll.

3.85" x 4.05"

18/cs



KCC 13217

KC Scott® 100% RF Standard Roll Bathroom Tissue

Strong and absorbent. Provides home-like comfort at your business. Meets EPA standards; FSC® and EcoLogo® certified. 100% recycled fiber. 2 ply. 506 sheets per pack. 80 rolls per case.

4.1" x 4.0"

80/cs

EPA Compliant Paper



KC Scott® 2 Ply Standard Roll Bathroom Tissue

Meets EPA Standards for post consumer waste content. FSC Certified. Use dispenser: 09021. 605 per pack; 20 per case.

KCC 13607 4.1" x 4" 20/cs



Kimberly-Clark® Kleenex® Hygienic Bathroom Tissue

Combines softness with handsome packaging and easy maintenance. Fully enclosed Hygienic Bath Tissue system reduces potential of product contamination. 2 Ply, White. 250 sheets per pack; 36 per case.

KCC 48280 4.5" x 8.3" 36/cs



WausauPaper® EcoSoft™ Tissue

100% recycled. Contains a minimum 20% post-consumer waste, which meets EPA guidelines. Controlled-use. 2 Ply. 3 3/4" wide with a 1.9" core. Use Dispenser: 72300, 72600, 88400. 616 sheets per roll, 48 rolls per case.

TTB616 3 3/4" x 4" 48/cs

Facial Tissue



WausauPaper® EcoSoft™ Green Seal® Facial Tissue

Offers softness and absorbency. Made of 100% recycled fiber, meets EPA guidelines, and is certified as environmentally preferable by Green Seal, Inc. 2 Ply; 8" x 8". Contains a minimum of 10% post-consumer waste.

FTB150 160 ct. 2 Ply 30/cs
WAU 15000 160 ct. 2 Ply 30/cs



Georgia-Pacific Envision® 2 Ply Facial Tissue

Economical, meets EPA guidelines for post consumer waste recycled fiber content. Flat Box 8" x 8.33"; White. Use Dispenser: 57440.

GPC 47410 100 ct. 2 Ply 30/cs



Kimberly-Clark® Surpass® Boutique™ Facial Tissue

Superb combination of value, softness and 2 ply strength. Meets EPA standards for a minimum post consumer waste content. Meets EPA standards; FSC® and EcoLogo® certified. 8" W x 8.3" L; 2 Ply.

KCC 21320 110 ct. 36/cs



Kimberly-Clark® Surpass® Facial Tissue

Meets EPA standards for minimum post consumer waste content. Meets EPA standards; FSC® and EcoLogo® certified. 8" x 8.4", 2-ply.

KCC 21390 125 ct. White 2 Ply 60/cs



Kimberly-Clark® Surpass® Facial Tissue

Available with 15% more tissues per box than standard tissue boxes, with a Signal® feature that alerts you when it's time to change the box. Meets EPA standards; FSC® and EcoLogo® certified. 8" x 8.3", 2-ply.

KCC 21340 100 ct. White 2 Ply 30/cs



WausauPaper® EcoSoft™ Facial Tissue

Made from 100% recycled fibers and contains a minimum of 10% post-consumer waste, which meets EPA guidelines. Made entirely from recovered fibers. 8" x 8".

WAW 13000 100 ct. 2 Ply 30/cs

Jumbo Tissue



Georgia-Pacific Envision® 2 Ply Jumbo Jr Bath Tissue

Ideal for washrooms in public stores, and cafeterias/quick service restaurants, this jumbo-sized roll delivers 1000 feet of tissue for reduced maintenance. Sheet Size: 3.5" x 1000". EPA Compliant, White.

GPC 12798 3.5" x 1000' 2 Ply 8/cs



Von Drehle Preserve® Jumbo Roll Tissue

Made from 100% recycled fiber. Green Seal™ Certified. With fewer refills required, maintenance time is reduced up to 90%, and the larger roll helps control pilferage. A perfect combination of quality and economy, these economically priced jumbo rolls are ideal for high-traffic locations. Tissue will not clog plumbing, safe for septic systems.

TTV2109 2000' 1 Ply 12/cs
TTV4112 4000' 1 Ply 6/cs
TTV2750 750' 2 Ply 12/cs
TTVJRT 800' 2 Ply 12/cs
TTV1209 1000' 2 Ply 12/cs
TTV2212 2000' 2 Ply 6/cs



WausauPaper® EcoSoft™ 9" Jumbo Universal Tissue

Available 1 ply and 2 ply. 100% recycled and meets EPA guidelines for post-consumer wastepaper content. Jumbo tissue has a 9-inch diameter and is ideal for heavy traffic facilities. Contains a minimum of 20% post-consumer waste, which meets EPA guidelines. Embossed for softness. Each roll equal to 5.3 rolls standard tissue.

TTB2001 3 7/8" x 2000' 1 Ply 12/cs
TTB1002 3 1/2" x 1000' 2 Ply 12/cs

EPA Compliant Paper

Center Pull Towels



Von Drehle Preserve® Center Pull Towels

Each roll is perforated to deliver only one clean, dry, germ free sheet at a time. Controls usage and reduces waste. With the hands free dispenser, you use only the towel you touch, eliminating contamination. Ideal for restrooms, kitchens, food-preparation areas and other high-traffic locations where sanitation is important.

TOWV320	320'	White	2 Ply	12/cs
TOWV6602T	660'	White	2 Ply	6/cs

Household Towels



Kimberly-Clark® Scott® Kitchen Roll Towel

More sheets on a roll to last longer. Smaller case for easier handling and storage. Made with Absorbency Pockets® for soft and absorbent performance. Meets EPA standards; FSC® and EcoLogo® certified. 11" x 8.78"; White.

KCC 41482	128 ct.	20/cs
-----------	---------	-------

C-Fold Towels



WausauPaper® EcoSoft™ Green Seal™ C-Fold Towel

100% recycled, exceeds EPA guidelines for post-consumer wastepaper content, and features environmentally preferable packaging. Use Dispenser: 53200, 53500.

TOWB493	10 1/8" x 13"	Natural White	12/200/cs
WAW 49300	10 1/8" x 13"	Natural White	12/200/cs



Georgia-Pacific BigFold® C-Fold Replacement Towel

Engineered to be EPA compliant and fit into existing C-Fold and multifold dispensers with no adapter required.

GPC 33587	10.20" x 10.80"	White	10/220/cs
-----------	-----------------	-------	-----------



Kimberly-Clark® Scott® C-Fold Towels

Made with Absorbency Pockets™ that absorbs lots of water fast, for superior hand drying. Fits into any multi-fold dispenser. Meets EPA standards; FSC® and EcoLogo® certified.

KCC 01510	10.125" x 13.15"	White	12/200/cs
-----------	------------------	-------	-----------



WausauPaper® EcoSoft™ C-Fold Towel

100% recycled. Contains a minimum of 40% post-consumer waste, which meets EPA guidelines. Use Dispenser: 53200, 53500.

TOWB495	10 1/8" x 13"	White	12/200/cs
---------	---------------	-------	-----------

Multifold Towels



Von Drehle Preserve Multi-Fold Towels

You don't have to choose between recycled paper & superior performance. These soft, absorbent towels have a drying strength that reduces consumption. Packed for easy handling and storage.

TOWV548W	9.25" x 9.25"	White	16/250/cs
TOWV548K	9.25" x 9.5"	Kraft	16/250/cs



WausauPaper® EcoSoft™ Green Seal® Multifold Towels

Designed for those seeking to achieve green status for their facility and purchase folded towels produced with methods less harmful to the environment. Contains minimum of 50% post-consumer wastepaper. Made with a de-inking process free of chlorine and other harmful chemicals. 100% recycled, exceeds EPA guidelines for post-consumer wastepaper content, and features environmentally preferable packaging. Green Seal™ Certified. Use Dispenser: 53200, 53500.

TOWB483	9 1/8" x 9 1/2"	Natural White	16/250/cs
---------	-----------------	---------------	-----------



WausauPaper® EcoSoft™ Multifold Towels

This quality multifold towel is designed for those customers who support the recycling movement and request toweling that helps create a cleaner environment. This toweling is ideal for lodging/hospitality properties and commercial buildings. Made entirely from recovered fibers. 100% recycled. Contains a minimum of 40% post-consumer waste, which meets EPA guidelines. Use Dispenser: 53200, 53500.

TOWB480	9 1/8" x 9 1/2"	Natural	16/250/cs
TOWB485	9 1/8" x 9 1/2"	White	16/250/cs



WausauPaper® EcoSoft™ OptiFold™ ES Towel

Designed for those seeking to achieve green status for their facility. It is made of 100% recycled fiber with up to 73% post-consumer waste. Use dispenser: 53200, 53500, 53800.

TOWB48790	8" x 9 1/2"	Natural White	16/250/cs
-----------	-------------	---------------	-----------

EPA Compliant Paper



GPC 23304

Georgia-Pacific Envision® Multifold Paper Towel

EPA compliant. Designed to fit into a wide range of multifold or trifold towel dispensers. 1 Ply. Use disp: 54701, 54720, 56601, 56620, 56630-01, 56650-01.

9.25" x 9.5" Brown 16/250/cs



KCC 29575

KC Scott® Slimfold Towel

The unique design fits the tightest spaces inside or outside of the washroom. One-at-a-time dispensing reduces waste. Meets EPA standards; FSC® and EcoLogo® certified. 7.5" x 11.6".

7.5" x 11.6" 24/110/cs



KCC 13253

Kimberly-Clark® Kleenex® Scottfold® White Towel

Made to eliminate dispensing problems--and guaranteed! Designed to dispense one-at-a-time, every time. Zip-Half Pack cases. 1-ply. Use dispenser: 09214, 09215, 09216, 39640, 39711, 39712.

7.8" x 12.4" 25/120/cs



KCC 13254

Kimberly-Clark® Kleenex® Scottfold® White Towel

Made to eliminate dispensing problems--and guaranteed! Designed to dispense one-at-a-time, every time. Zip-Half Pack cases. 1-ply. Use dispenser: 09217, 09905, 09906.

9.4" x 12.4" 25/120/cs



KCC 01860

Kimberly-Clark® Scott® Multi-Fold Towel

Low wet strength transportation towel.

9.4" x 9.25" White 16/250/cs



KCC 01804

Kimberly-Clark® Scott® Multi-Fold Towels

Designed to reduce waste and provide excellent hand drying with exclusive Absorbency Pockets™ that absorb lots of water fast. Meets EPA standards; FSC® and EcoLogo® certified.

9.2" x 9.4" White 1 Ply 16/250/cs



TOWP200B

Premium Multi-Fold Towel

100% recycled material. 250 per pack, 16 packs per case.

White 16/250/cs

Singlefold Towels



GPC 23504

Georgia-Pacific Envision® Singlefold Towel

EPA compliant. Use with dispenser: 56701, 56720.

10.25" x 9.25" Natural 16/250/cs



TOWB473

WausauPaper® EcoSoft™ Green Seal™ Singlefold Towel

100% recycled, exceeds EPA guidelines for post-consumer wastepaper content, and features environmentally preferable packaging. Green Seal® Certified. Use Dispenser: 53200, 53500.

9" x 10" Natural White 16/250/cs



TOWB470

WausauPaper® EcoSoft™ Singlefold Towels

Designed for those customers who support the recycling movement and request toeling that helps create a cleaner environment. Made entirely from recovered fibers. 100% recycled. Contains a minimum of 40% post-consumer waste, which meets EPA guidelines. Use Dispenser: 53200, 53500.

9" x 10" Natural 16/250/cs



KCC 01700

Kimberly-Clark® Scott® Single-Fold Towels

For areas in business that require an economy line of washroom products, Single-Fold Towels offer an economy folded towel. One ply. Meets EPA standards; FSC® and EcoLogo® certified.

9.3" x 10.5" White 16/250/cs

Roll Towels



Georgia-Pacific enMotion® High Capacity EPA Roll Towels

High capacity, high quality, roll towels for enMotion classic or Impulse 10 automated, electronic roll towel systems. These cost-effective, high-quality, EPA CPG compliant for minimum post consumer waste percent roll towels are specifically designed to be used with our innovative wall mounted enMotion® touch-free dispensers to provide reliable towel dispensing at the wave of a hand. Each high-capacity roll provides up to 800 hand dries for continuous service and reduced service visits. One-at-a-time, touch free dispensing reduces usage and minimizes the risk of cross contamination.

TOWG89480

10" x 800' Brown 6/cs

TOWG8947

10" x 800' White 6/cs

EPA Compliant Paper



GPC 26301

Georgia-Pacific Envision® High Capacity Roll Towel

High capacity, EPA compliant, economical, brown hardwood towels offer reliable performance at a low cost. Use dispenser 54338, 56201.

7.875" x 800' Natural 6/cs



TOWV810B

Von Drehle Heavy Weight Hardwound Towel

These bulky, thirsty towels are soft, strong and absorbent, yet competitively priced. Non-perforated. White. Core Size: 1.75". 28 lb. basis weight. Green Seal™ Certified.

10" x 600' White, 28 lb. 6/cs



TOWV828B

Von Drehle Heavy Weight Hardwound Towel

These bulky, thirsty towels are soft, strong and absorbent, yet competitively priced. Non-perforated. White. Core Size: 1.625". 28 lb. basis weight. Green Seal™ Certified.

7.9" x 600' White, 28 lb. 12/cs



TOWV880NAT

TOWV88012NAT

Von Drehle Preserve® Hardwound Towels

A universal core permits use with our large selection of dispensers and with most others on the market. These bulky, thirsty towels are soft, strong and absorbent, yet competitively priced. Non-perforated. 100% recycled.

7.9" x 800' Natural 6/cs

7.9" x 800' Natural 12/cs



TOWV860B

TOWV880B

TOWV816B

Von Drehle Preserve® Hardwound Towels

Green Seal™ Certified. A universal core permits use with our large selection of dispensers and with most others on the market. These bulky, thirsty towels are soft, strong and absorbent, yet competitively priced. Non-perforated. 100% recycled.

7.9" x 600' White 12/cs

7.9" x 800' White 6/cs

10" x 800' White 6/cs



TOWV880BP

Von Drehle White Hardwound Roll Towel

Made in the U.S.A., 100% recycled. Chlorine-free technology. Green Seal® certified. Ply: 1. Roll width: 7.9"; Core Size: 1.25.

7.9" x 800' 6/cs



TOWB314

TOWB31000

WausauPaper® EcoSoft™ Green Seal® Control Roll Towels

Green Seal® 100% recycled controlled roll towels. Natural towels contain up to 82% post-consumer waste; natural white towels contain up to 73% post-consumer waste. Certified by Green Seal, Inc. in Washington, DC. Meets environmental standards. EcoSoft™ Green Seal® controlled roll towels are 100% recycled and exceeds EPA guidelines for post-consumer wastepaper content.

8" x 800' Natural White 6/cs

8" x 1000' Natural 6/cs



WAU 46300

TOWB458

WAU 45800

TOWB459

WausauPaper® EcoSoft™ Universal Green Seal Roll Towels

Green Seal® 100% recycled 8" universal roll towels. Certified by Green Seal, Inc. in Washington, DC. Meets environmental standards. Green Seal®. Contains a minimum of 40% post-consumer waste, which meets EPA guidelines. Can be dispensed through universal roll towel dispensers. 1.9" universal core; Use dispenser: 16000, 16300, 16500.

8" x 425' Natural White 12/cs

8" x 800' Natural 6/cs

8" x 800' Natural 6/cs

8" x 800' Natural White 6/cs



TOWB460

WausauPaper® EcoSoft™ Universal Roll Towels

Various sizes available. 100% recycled. Contains a minimum of 40% post-consumer waste, which meets EPA guidelines. Can be dispensed through universal roll towel dispensers.

8" x 425' Natural 12/cs



KCC 11090

Kimberly-Clark® Kleenex® Hard Roll Towel

Soft feel and premium quality in a roll towel, preferred for exceptional hand drying performance. Meets EPA standards; FSC® and EcoLogo® certified. Use dispenser 09073, 09746, 09765, 09990, 09991.

8" x 600' White 6/cs



KCC 50606

Kimberly-Clark® Kleenex® Hard Roll Towel

Kleenex® hard roll towels with new Zip-Off Top packaging have absorbency pockets that absorb lots of water fast, for superior hand drying. FSC® Certified. 1 Ply, 1.75" core. Use dispenser 09992, 09998, 09999, 09994, 09803. 600' per pack; 6 per case.

8" x 600' 1 Ply 6/cs

EPA Compliant Paper



KCC 02068

Kimberly-Clark® Scott® Hard Roll Towel

Features absorbency pockets. Meets EPA standards; FSC® and EcoLogo® certified.

8" x 400' White 12/cs



TOWK1040

Kimberly-Clark® Scott® Hard Roll Towel

High-footage roll towel that provides reliable quality that lasts. Highly absorbent, so you'll use less and waste less. Meets EPA standards; FSC® and EcoLogo® certified.

8" x 800' White 12/cs



KCC 12388

Kimberly-Clark® Scott® Slimroll™ Towel

High capacity in a compact roll for less maintenance time, run-outs and complaints. Highly absorbent so you'll use less and waste less. Meets EPA standards; FSC® and EcoLogo® certified. Use dispenser: 10441, 36016, 36034, 36035.

8" x 580' 6/cs



TOWB316

TOWB319

WausauPaper® EcoSoft™ Controlled Roll Towels

Features a blend of pre-consumer and post-consumer wastepaper which ensures softness and quality. EcoSoft controlled roll towels are 100% recovered fibers and contain a minimum 40% post-consumer waste, which meets EPA guidelines.

8" x 630' White 6/cs

8" x 800' White 6/cs

Food Service



GPC 32002

Georgia-Pacific EasyNap™ Embossed Dispenser Napkin

Unique fold design allows more napkins per dispenser, which reduces labor costs & improves dispensing. Reduce costs by up to 30%. 1-Ply, Embossed.

6.5" x 10" White 24/250/cs



SCC 075

Solo® Treated Paper Soufflé Portion Cups

While these soufflé portion cups work well for your customers, they're also an economical solution in the back-of-the-house. Chefs like to use these versatile cups as measuring tools.

3/4 oz. 5000/cs

Cotton / Canvas / Jersey Gloves



Impact® ProGuard® Jersey Work Gloves

Jersey, knit wrist, clute pattern, straight thumb. Applications: general maintenance, material handling, warehouse, shipping and receiving.

GLVJERSEY1

Large

12pr/cs



Impact® String Knit PVC Dotted Both Sides Glove

ProGuard®. Machine knit. Excellent grip. Ambidextrous use. Extra long glove life. Natural.

GLVDOT

Large

12pr/cs

Latex Gloves



AmerCare® Apollo™ Latex Powder-Free Gloves

Fully textured, low allergen, 5.5 mils. Approved for food use.

GLVEXAMFRSM1
GLVEXAMFRMD1

Small
Medium

10/100/cs
10/100/cs



AmerCare® Neptune™ Yellow Flock Lined Latex Gloves

Honey-combed texture, household gloves. Beaded cuff. 18 mils. Approved for food use. Individually packed, 10 dozen pair per case.

GLVHHSM1
GLVHHMD1
GLVHHLG1
GLVHHXLG1

Small
Medium
Large
XL

10/12/cs
10/12/cs
10/12/cs
10/12/cs



AmerCare® Tuff Skin™ Latex Disposable Gloves

Fits like 2nd skin, 5.0 mils. USDA accepted for food use. Beaded cuff for added protection and easier donning. Lightly powdered with U.S.P. absorbable cornstarch for easy donning and removal. Designed for non-medical applications. Powdered, soft modulus, beaded, 7.5 mils, USDA accepted.

GLVEXAMSM1
GLVEXAM
GLVEXAMLRG
GLVEXAMXL1

Small
Medium
Large
XL

10/100/cs
10/100/cs
10/100/cs
10/100/cs

Leather Gloves



Mens Leather Palm Glove LG Safety Cuff Gunnut Dz

GLVLEATHERPT1

PR

Nitrile Gloves



AmerCare® Grape Grip™ Powder-Free Nitrile Exam Gloves

100% latex free. Grape color, textured, 6.3 mils.

GLVFPNITS
GLVFPNITM
GLVFPNITL
GLVFPNITXL

Small
Medium
Large
XL

10/100/cs
10/100/cs
10/100/cs
10/100/cs

Specialty Gloves



AmerCare® Chameleon™ Stretch Synthetic Exam Gloves

Powder-free. 100% latex free. Feels like latex. 7.1 mils.

GLVMGPFSSYM
GLVMGPFSSYL
GLVMGPFSSYXL

Medium
Large
XL

10/100/cs
10/100/cs
10/100/cs



AmerCare® Foodguard™ Polyethylene Embossed Food Handler

Embossed, 100% Latex Free, .02 mm. USDA accepted for food use. Packed: 10 x 10 x 100.

GLVFOOD1

Large

10/10/100/cs



AmerCare® Gladiator Powder Free Synthetic Gloves

All components are FDA accepted for food contact.

3199-3

Large

100/cs



AmerCare® Gladiator Stretch Synthetic Powdered Gloves

100% latex free but feels like latex. 6.3 mils.

GLVSYNSM
GLVSYNMD
GLVSYNLRG
GLVSYNXLG

Small
Medium
Large
XL

10/100/cs
10/100/cs
10/100/cs
10/100/cs

Vinyl Gloves



AmerCare® Anchor Vinyl Disposal Gloves

100% latex free. Approved for food use. Comes in powdered with U.S.P. absorbable cornstarch and powder-free. Designed for non-medical applications. 4.1 mils.

GLVVINPFS	Small	Powder Free	10/100/cs
GLVVINPFM	Medium	Powder Free	10/100/cs
GLVVINPFL	Large	Powder Free	10/100/cs
GLVVINPFXL	XL	Powder Free	10/100/cs



AmerCare® Paradigm™ Vinyl Gloves

USDA accepted for food use. 100% Latex Free. Powder Free. Advanced poly vinyl chloride formulation. Designed for non-medical applications. 6.1 mils. USDA accepted for food use. Advanced polyvinyl chloride formulation. Bar coded for inventory control.

GLVPFSYNS1	Small		10/100/cs
GLVPFSYNM	Medium		10/100/cs
GLVPFSYNL	Large		10/100/cs
GLVPFSYNXL1	XL		10/100/cs

Abel Industries, Inc.

Catalog Index

.....	2
Ash	29
Extractors	
Extractors	17
Gloves	
Cotton / Canvas / Jersey	35
Latex	35
Leather	35
Nitrile	35
Specialty.....	35
Vinyl.....	36
High Density	23
Low Density.....	23
Miscellaneous Carpet Tools	2
Recycle.....	29
Sanitary Napkin	30
Scrubbers - Auto & Walk Behind	
Scrubbers.....	18
Scrubbers - Rider	
Scrubbers.....	18
Specialty	
Specialty.....	18
Step	30
Tissues	
1 Ply Bath.....	24
2 Ply Bath.....	24
Facial.....	25
Jumbo.....	25
Toilet Seat Covers & Dispenser	25
Totes.....	31
Towels	
Center Pull	25
C-Fold	26
Household	25
Multifold	26
Roll Towels	27
Singlefold.....	26
Trash.....	31
Vacuum	
Accessories	21
Portable Vacuum	19
Specialty.....	20
Upright Vacuum.....	20
Wide Vacuum	21
Wastebasket.....	31