



Introducing

# Balance™

UHS Sealer / Finish

- New 'Shiny' Polymers...
- High Burnish Response...
- Longer Lasting Performance!



# NCL®

World Class Cleaning Solutions®



Achieving the perfect

# Balance™

Consistent  
Elegant Performance!

Achieving the perfect **BALANCE™** in a floor finish is much like a professional dancer who practices and rehearses each component of a performance until it becomes absolute perfection. And like a great dancer, **BALANCE™** produces consistent results, performance after performance, and that inspires total confidence and satisfaction.



- New 'shiny' polymers for the ultimate in 'Wet-Look' gloss
- New, high burnish response formulation for fast, easy gloss maintenance
- New, Longer Lasting Performance for maximum long-term durability



Floor Coating and Finishing Material  
As to Slip Resistance Only 18EL

**New  
Advanced  
Technology**

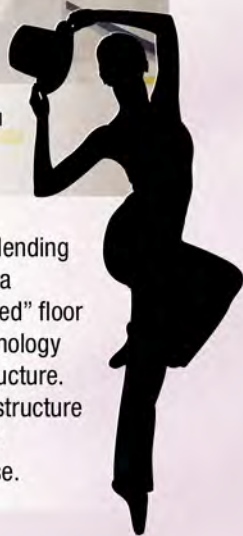
## Best in Class Performance

Looking for a high return on investment? Incorporating **BALANCE™** in your maintenance program offers compelling results in facility costs, operational efficiencies and overall satisfaction.



### New, advanced HPS™ Polywax technology

New, advanced polymer technology and innovative blending techniques have resulted in a superior performing "activated" floor finish. We call this new technology HPS™ - Hybrid Polywax Structure. It creates a 'shiny' polymer structure with excellent durability and outstanding burnish response.



### New, even easier to apply

BALANCE™ is easy to apply. BALANCE™ is optimized for flow, leveling, drying and humidity resistance. BALANCE™ can be applied by novices and professionals with outstanding results.

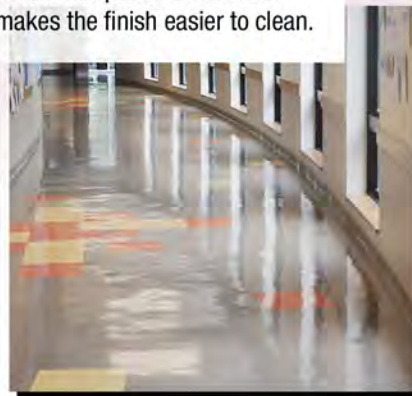


### Long Lasting Shine

HPS™ technology provides longer lasting gloss and durability. This unique technology resists dirt penetration which makes the finish easier to clean.

### Excellent Value

BALANCE™ has outstanding long term durability which is a key factor in saving time, money and reducing maintenance budgets.





## Do You Burnish Your Floors?

### Companion Floor Care Products



**Bare Bones®**  
No-Rinse / No-Scrub  
Liquefying Stripper



**Image™**  
Deodorizing  
Neutral Cleaner



**Qwik-Scrub™**  
Scrub & Recoat  
Cleaner



**Pop N Shine™**  
Gloss Restorer



## Then You Need

# Balance™

*UHS Sealer / Finish*

### Ultra Wet Look Gloss

- Easy to apply
- Excellent initial laydown gloss
- Humidity Resistant

### Excellent Burnish Response

- Excellent response when dry burnished
- For ultimate gloss restoration, use with Pop N Shine™ Gloss Restorer

### Maximum Durability

- HPS Technology results in a longer lasting finish with maximum durability

### Excellent Value

- Save money and labor over the life of the finish by reducing maintenance requirements

# Floor Care Solutions™



World Class Cleaning Solutions®

Philadelphia, PA 19123 • 1-800-628-2436

e-mail: [info@nclonline.com](mailto:info@nclonline.com) • website: [www.nclonline.com](http://www.nclonline.com)

Distributed by:

**Abel Industries, Inc.**

**1-800-662-ABEL**

**[www.abelsupply.com](http://www.abelsupply.com)**